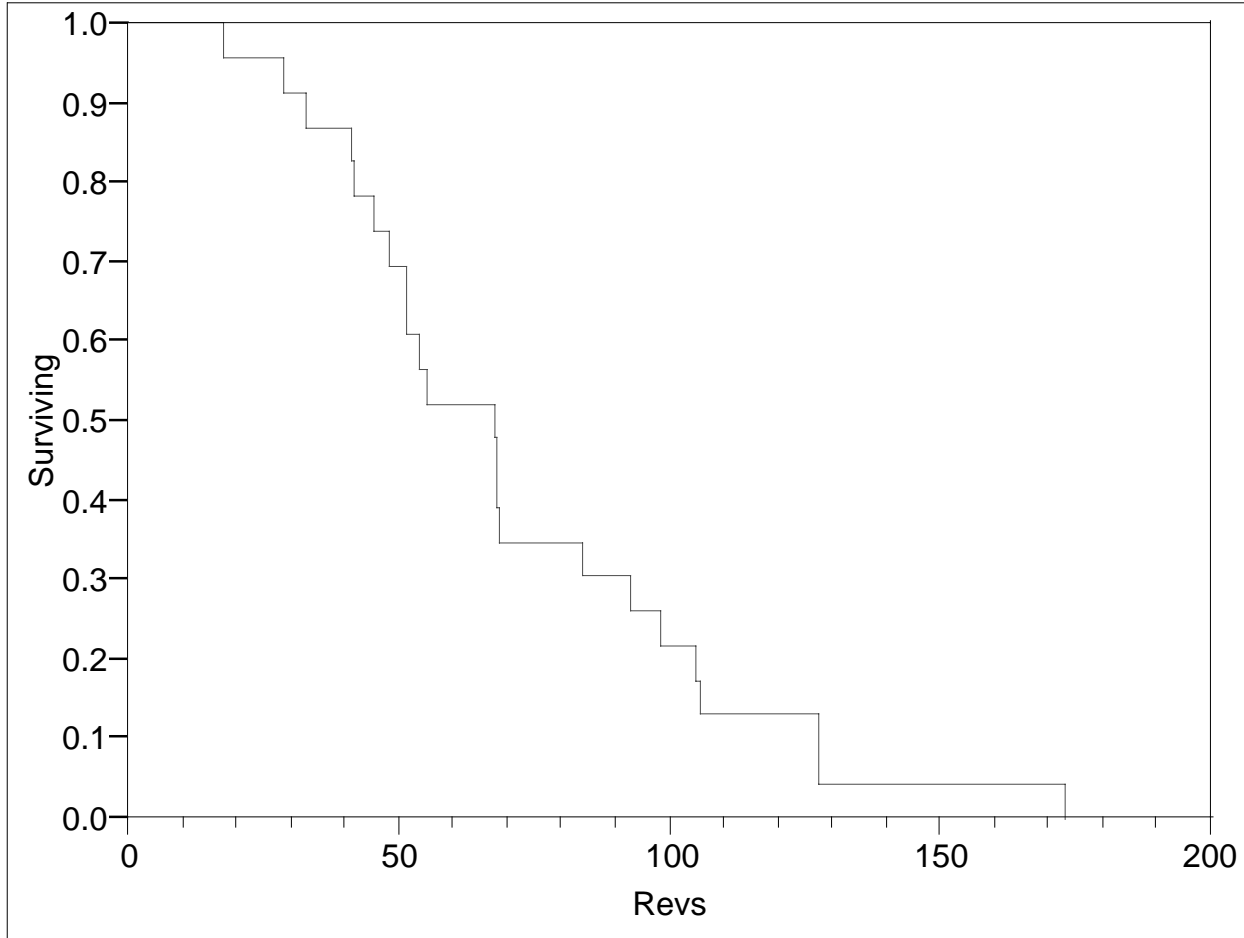


JMP Survival/Reliability Analysis

Product-Limit Survival Fit: Complete Data
Deep Groove Ball Bearings - Millions of Revolutions (Revs) to Failure

Survival Plot



Time to event: Revs

Summary

Group	N Failed	N Censored	Mean	Std Error
Combined	23	0	72.2209	7.81741

Quantiles

Group	Median Time	Lower95%	Upper95%	25% Failures	75% Failures
Combined	67.8	48.4	84.12	45.6	98.64

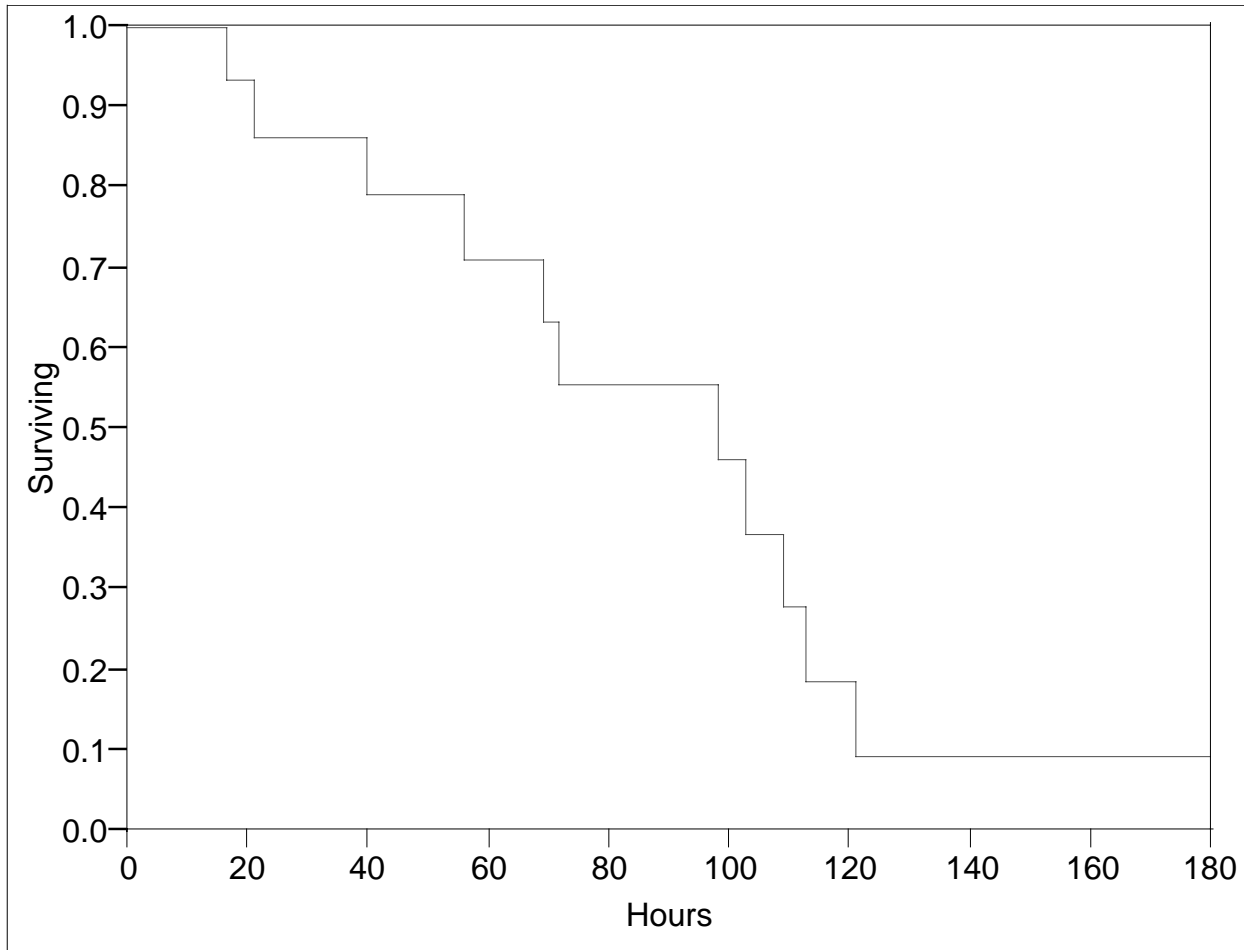
Deep Groove Ball Bearings - Millions of Revolutions (Revs) to Failure

Combined

Revs	Survival	Failure	SurvStdErr	N Failed	N Censored	At Risk
0.000	1.0000	0.0000	0.0000	0	0	23
17.880	0.9565	0.0435	0.0425	1	0	23
28.920	0.9130	0.0870	0.0588	1	0	22
33.000	0.8696	0.1304	0.0702	1	0	21
41.520	0.8261	0.1739	0.0790	1	0	20
42.120	0.7826	0.2174	0.0860	1	0	19
45.600	0.7391	0.2609	0.0916	1	0	18
48.400	0.6957	0.3043	0.0959	1	0	17
51.840	0.6522	0.3478	0.0993	1	0	16
51.960	0.6087	0.3913	0.1018	1	0	15
54.120	0.5652	0.4348	0.1034	1	0	14
55.560	0.5217	0.4783	0.1042	1	0	13
67.800	0.4783	0.5217	0.1042	1	0	12
68.640	0.3913	0.6087	0.1018	2	0	11
68.880	0.3478	0.6522	0.0993	1	0	9
84.120	0.3043	0.6957	0.0959	1	0	8
93.120	0.2609	0.7391	0.0916	1	0	7
98.640	0.2174	0.7826	0.0860	1	0	6
105.120	0.1739	0.8261	0.0790	1	0	5
105.840	0.1304	0.8696	0.0702	1	0	4
127.920	0.0870	0.9130	0.0588	1	0	3
128.040	0.0435	0.9565	0.0425	1	0	2
173.400	0.0000	1.0000	0.0000	1	0	1

Product-Limit Survival Fit: Censored Data
Accelerated Load on Bearings - Hours to Failure

Survival Plot



Time to event: Hours

Censored by: Censor

Summary

Group	N Failed	N Censored	Mean	Std Error
Combined	11	4	82.5902 Biased	10.05

Quantiles

Group	Median Time	Lower95%	Upper95%	25% Failures	75% Failures
Combined	98.3	39.9	113.2	56.4	113.2

Accelerated Load on Bearings - Hours to Failure

Combined

Hours	Survival	Failure	SurvStdErr	N Failed	N Censored	At Risk
0.000	1.0000	0.0000	0.0000	0	0	15
17.000	0.9333	0.0667	0.0644	1	0	15
18.600	0.9333	0.0667	0.0644	0	1	14
21.500	0.8615	0.1385	0.0911	1	0	13
39.900	0.7897	0.2103	0.1081	1	0	12
45.000	0.7897	0.2103	0.1081	0	1	11
56.400	0.7108	0.2892	0.1228	1	0	10
69.300	0.6318	0.3682	0.1321	1	0	9
72.100	0.5528	0.4472	0.1372	1	0	8
75.200	0.5528	0.4472	0.1372	0	1	7
98.300	0.4607	0.5393	0.1419	1	0	6
103.000	0.3685	0.6315	0.1403	1	0	5
109.200	0.2764	0.7236	0.1321	1	0	4
113.200	0.1843	0.8157	0.1158	1	0	3
121.500	0.0921	0.9079	0.0872	1	0	2
180.000	0.0921	0.9079	0.0872	0	1	1