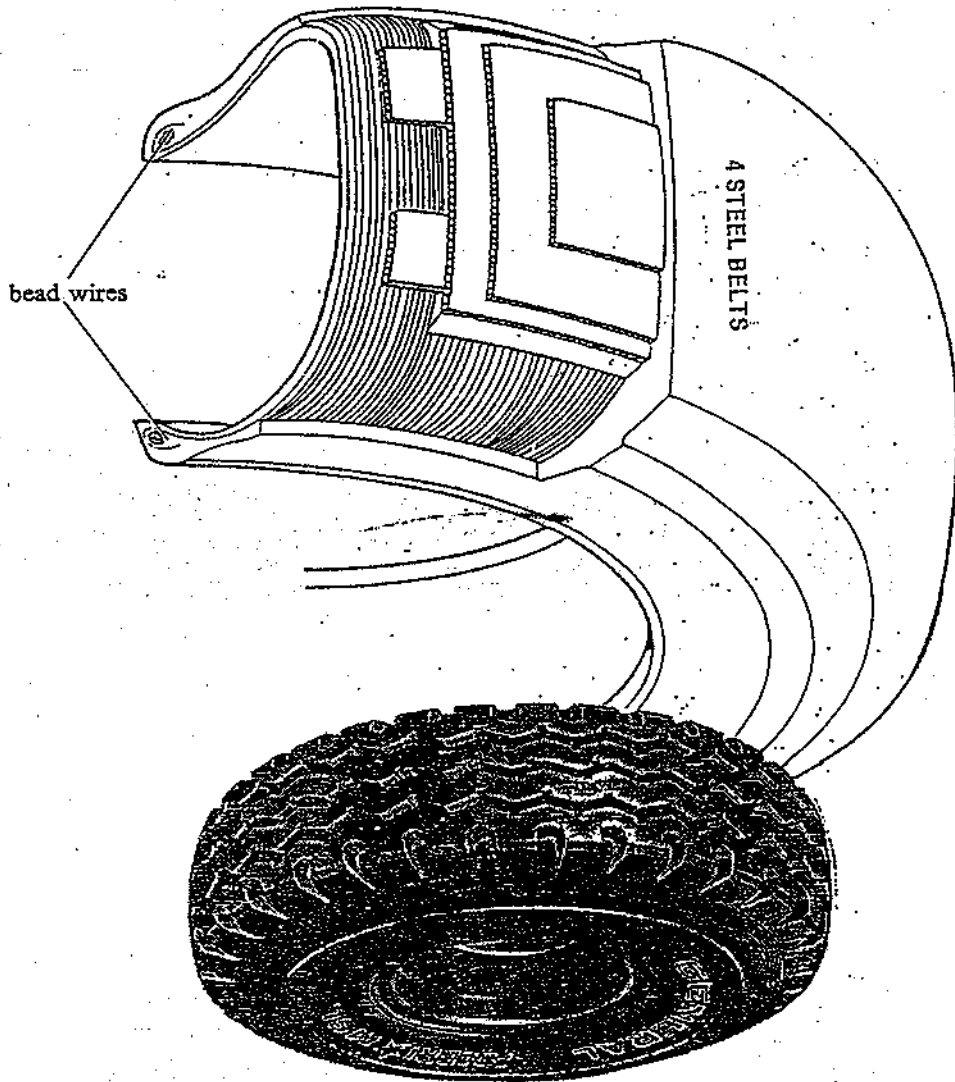
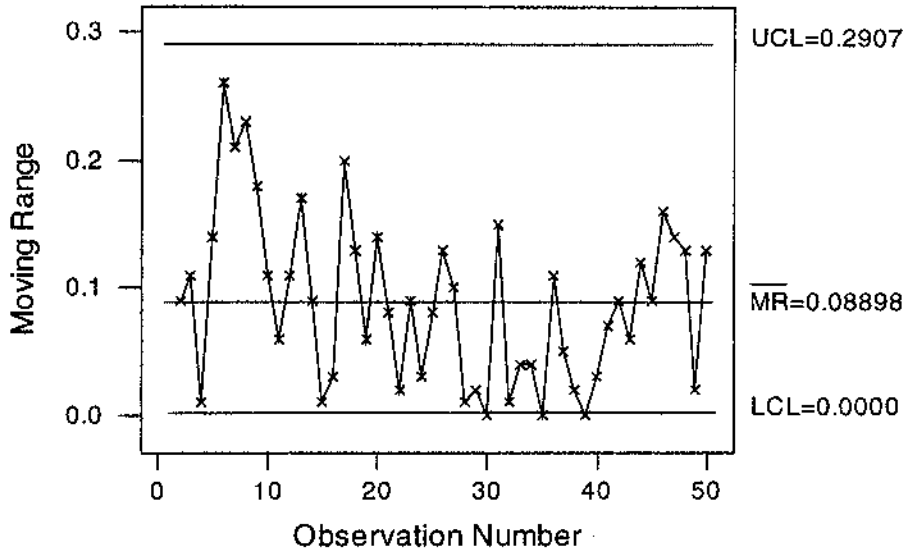


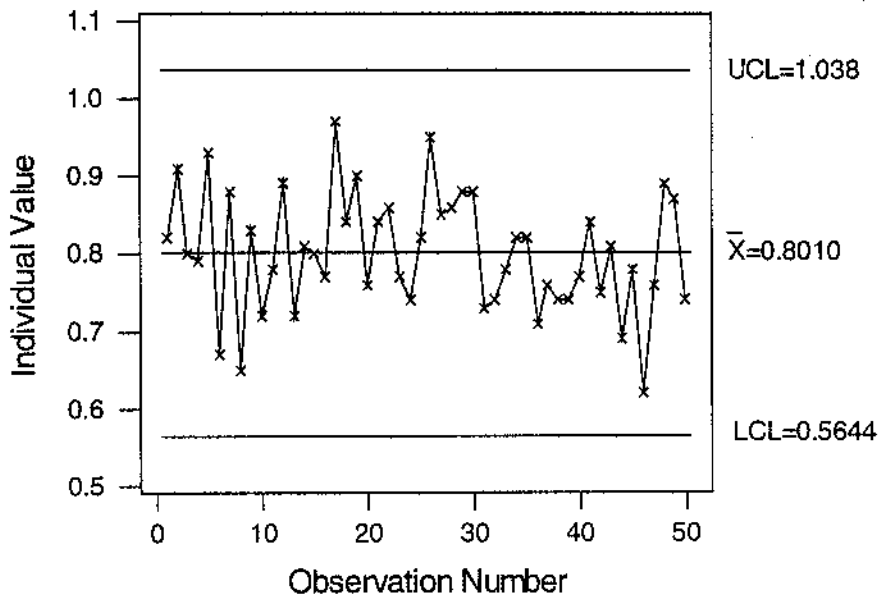
Cross section of AMERI * MSL tire



Coating Weight for Tire Bead Wire Moving Range Chart



Coating Weight for Tire Bead Wire Individuals Chart



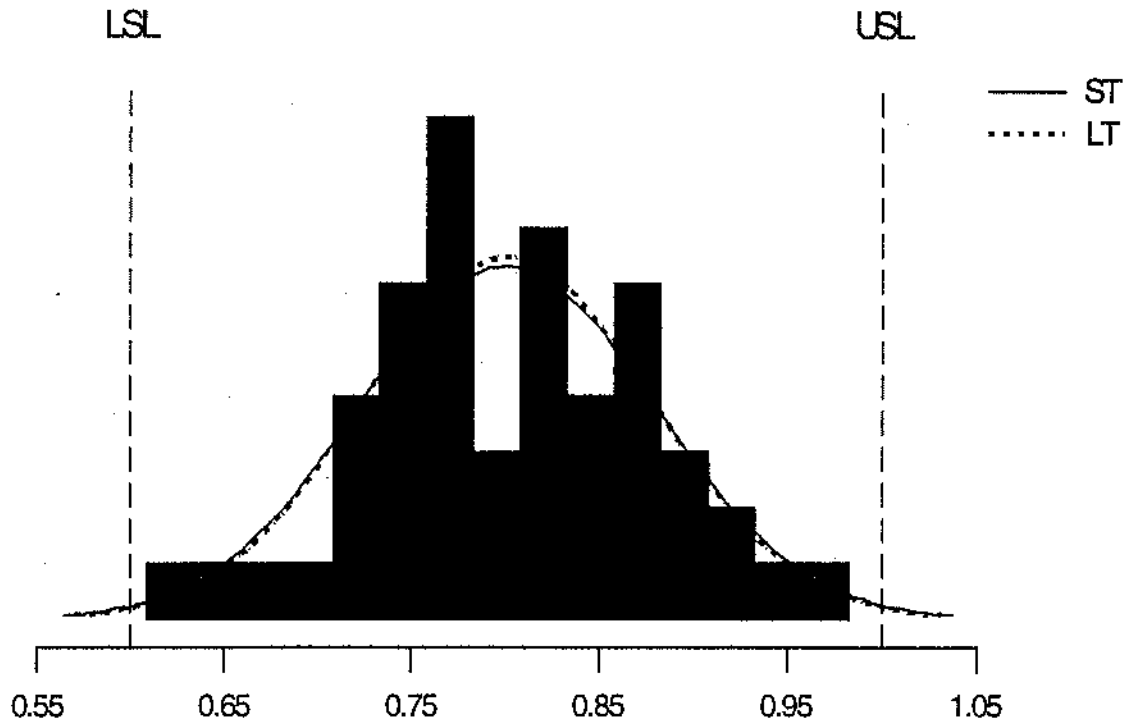
Process Capability Analysis for Coating Weight

Process Data

USL	1.00000
Target	0.80000
LSL	0.60000
Mean	0.80100
Sample N	50
StDev (ST)	0.0788826
StDev (LT)	0.0769033

Potential (ST) Capability

Cp	0.85
CPU	0.84
CPL	0.85
Cpk	0.84
Cpm	0.87



Overall (LT) Capability		Observed Performance		Expected ST Performance		Expected LT Performance	
Pp	0.87	PPM < LSL	0.00	PPM < LSL	5415.72	PPM < LSL	4478.75
PPU	0.86	PPM > USL	0.00	PPM > USL	5822.29	PPM > USL	4831.44
PPL	0.87	PPM Total	0.00	PPM Total	11238.01	PPM Total	9310.20
Ppk	0.86						

+

Data Collection Sheet

+

Run	$CuSO_4$	H_2SO_4	Fe(II)	Temp	Length	Coating Mass
1	70 g/l	8% w/v	3% w/v	45°C	33%	_____
2	30 g/l	8% w/v	3% w/v	65°C	33%	_____
3	70 g/l	4% w/v	3% w/v	65°C	33%	_____
4	30 g/l	8% w/v	1% w/v	65°C	100%	_____
5	70 g/l	4% w/v	1% w/v	45°C	33%	_____

etc.

+

Bronze Plating Experiment

Factors and levels in wire coating experiment

Label	Factor	Low Level	High Level
A	$CuSO_4$	30 g/l	70 g/l
B	H_2SO_4	4% w/v	8% w/v
C	Fe(II)	1% w/v	3% w/v
D	Temperature	45°C	65°C
E	Length	33%	100%

+

+

+

Wire Coating Experiment

Normal Plot of Effects

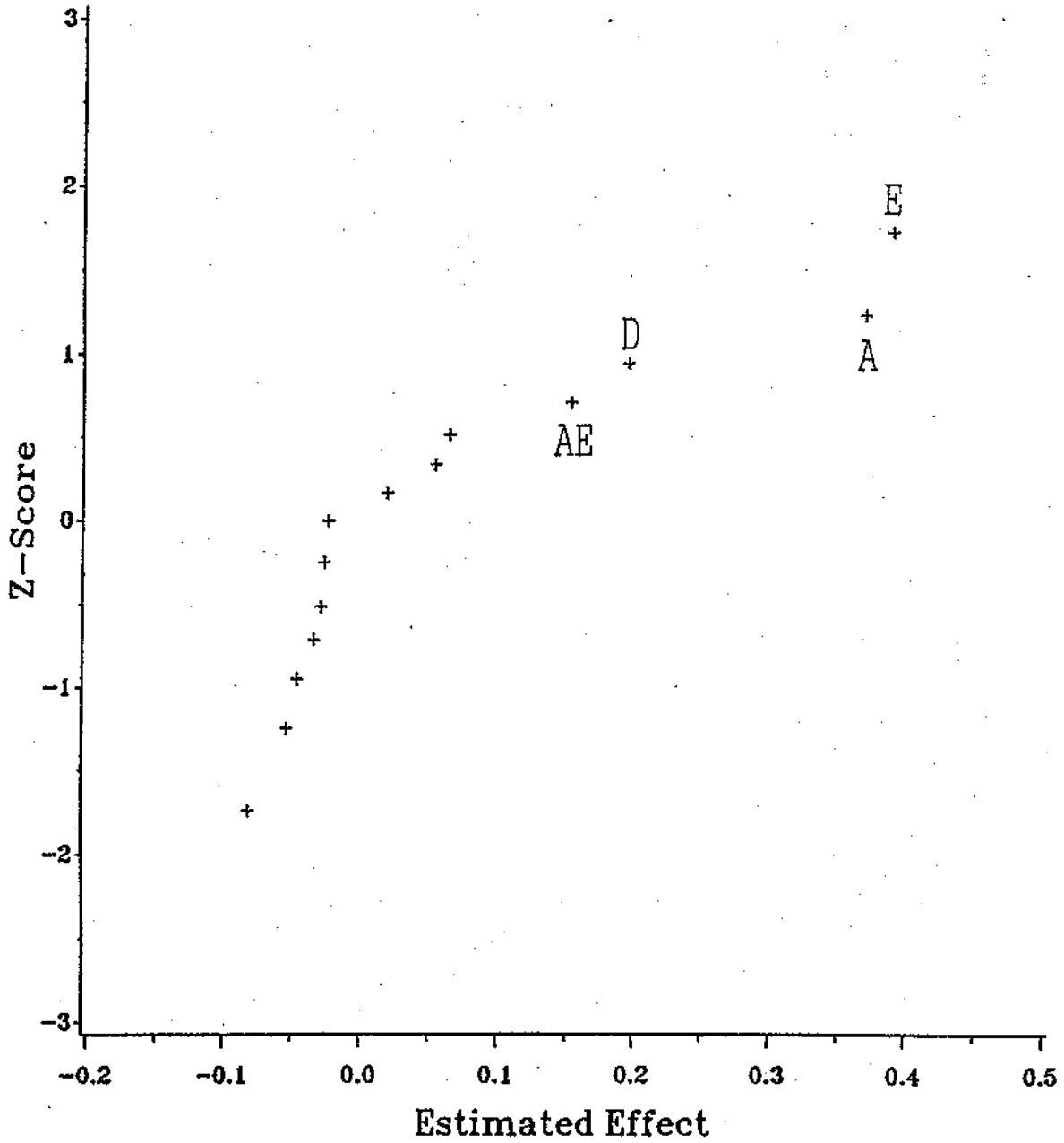


Figure : Pareto Chart
Wire Coating Experiment

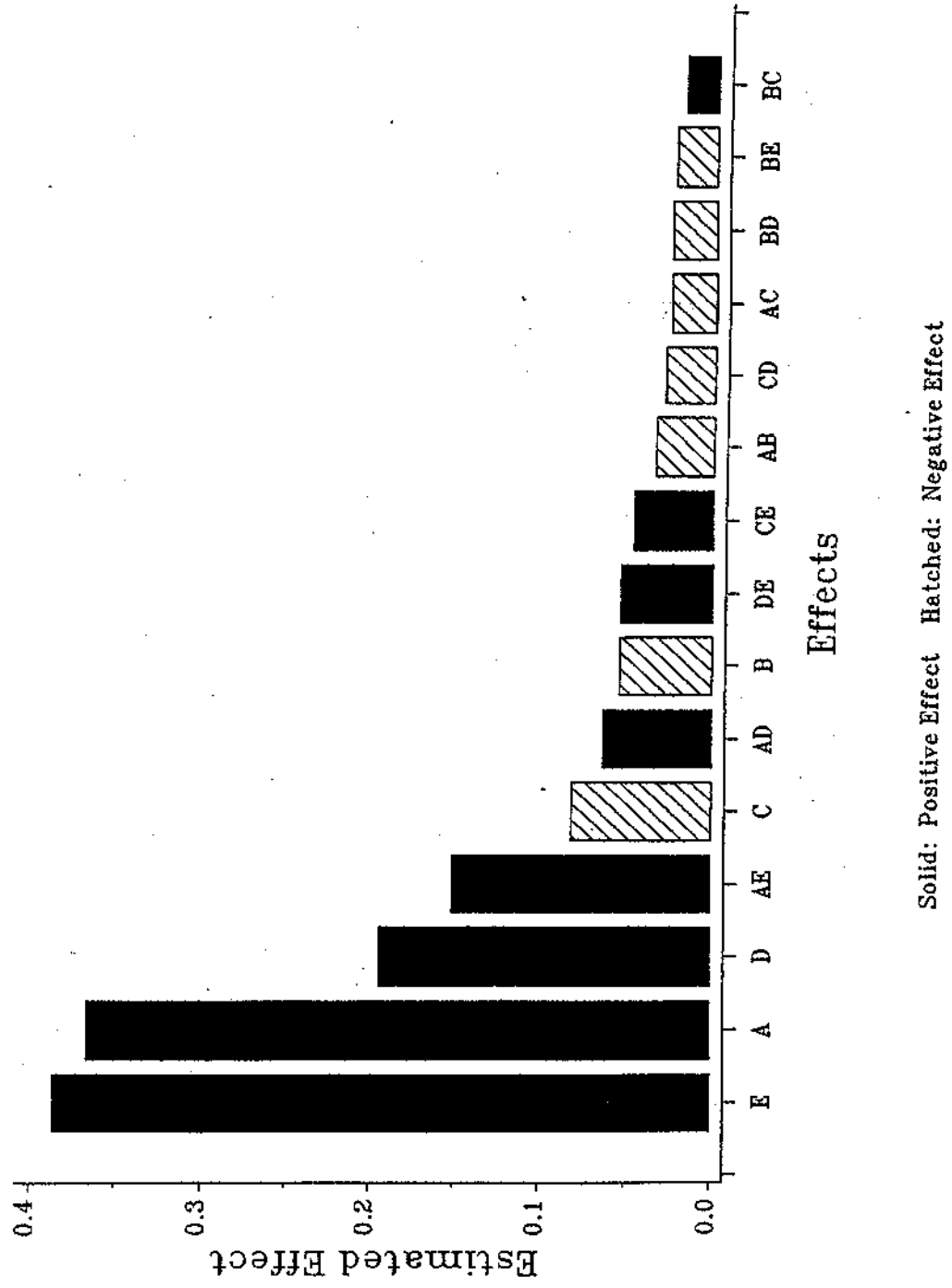


Figure : Lenth Quick and Easy Analysis
Wire Coating Experiment

