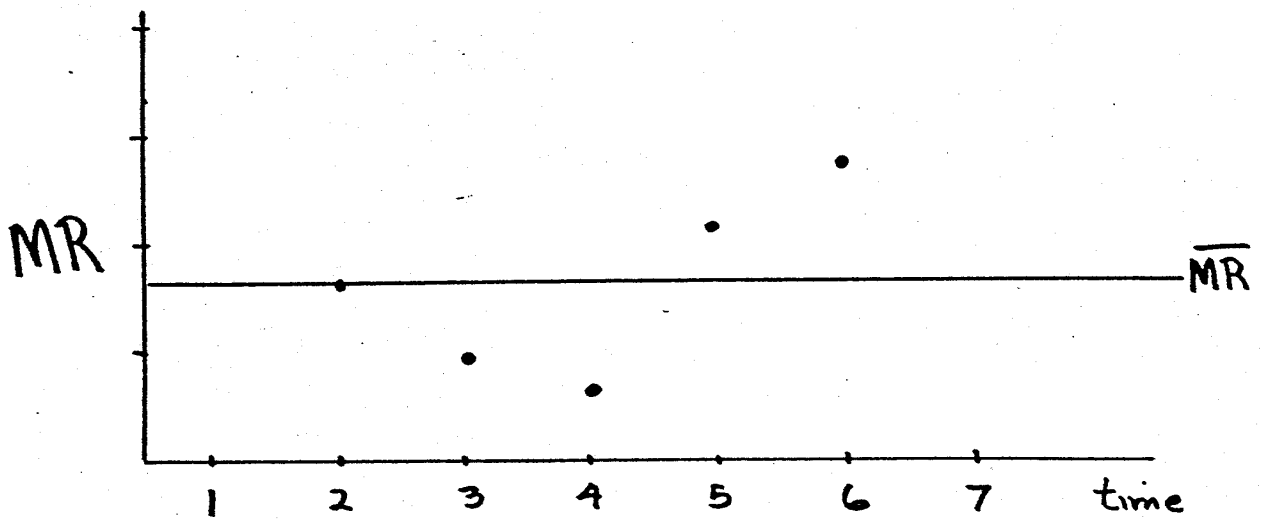
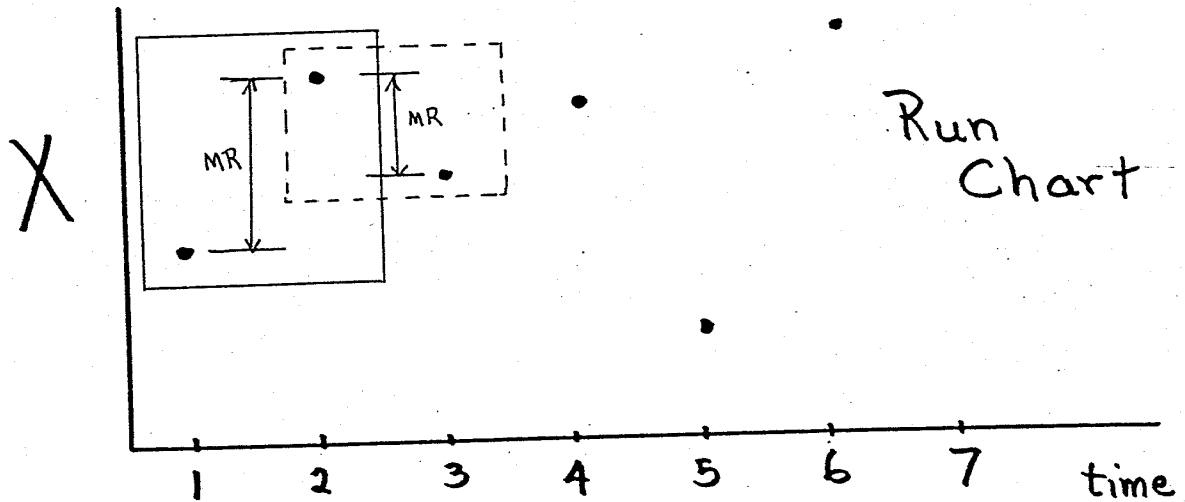


Coefficients for Individuals & Moving Range Charts



Since the moving subgroups are of size $n=2$, using $D_3=0$ & $D_4=3.267$ is appropriate

$$UCL = 3.267 \overline{MR}$$

$$LCL = 0$$

Individual Measurements

$$\bar{X} \pm 3 \left(\frac{\overline{MR}}{d_2} \right)$$

↑ estimate of the
std. dev of X

Since MR comes from a moving
subgroup of size $n=2$, use
 $d_2 = 1.128$

$$\bar{X} \pm 3 \left(\frac{\overline{MR}}{1.128} \right)$$

$$\bar{X} \pm 2.660 (\overline{MR})$$

Would you ever want to
use a moving subgroup with
 $n > 2$? Probably not! One
extreme value would create a
large range for several consecutive
subgroups.