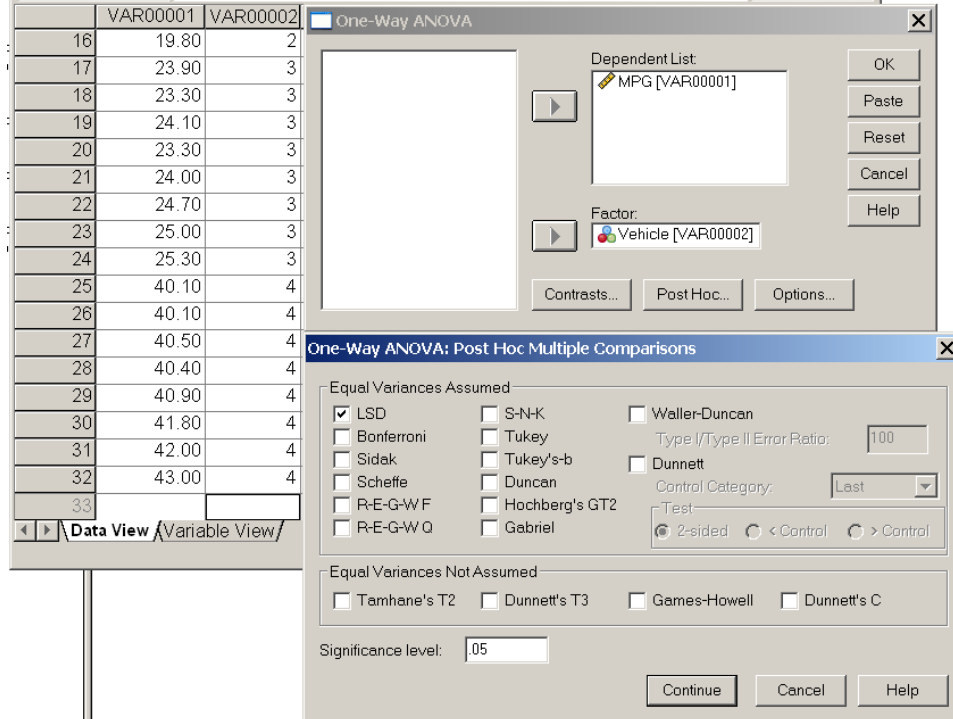
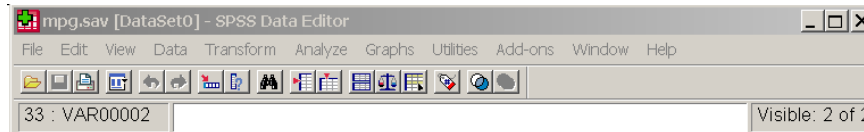
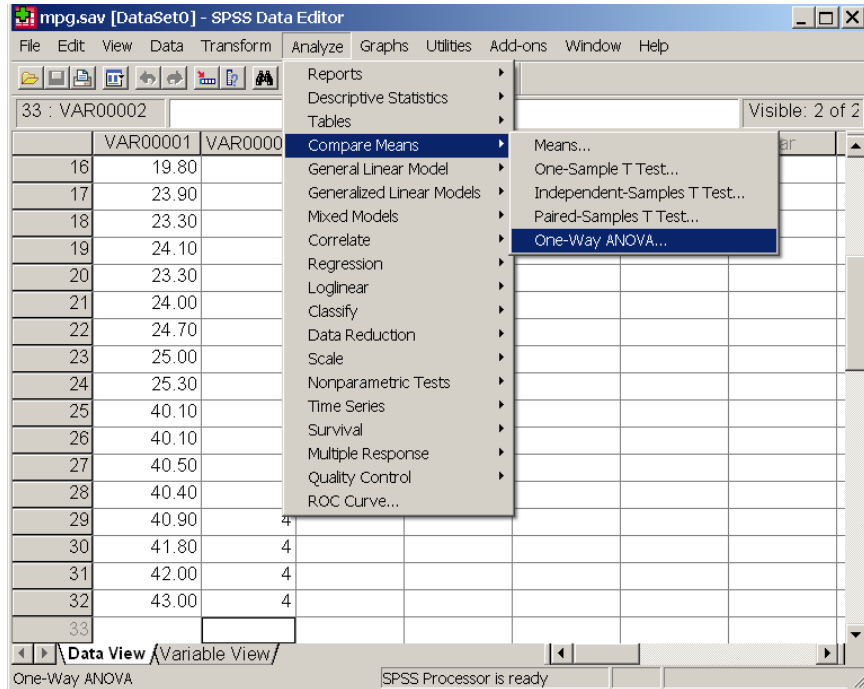


# SPSS Analysis of Vehicle MPG



## ANOVA

MPG

	Sum of Squares	df	Mean Square	F	Sig.
Between Groups	2166.460	3	722.153	1434.063	.000
Within Groups	14.100	28	.504		
Total	2180.560	31			

## Multiple Comparisons

Dependent Variable: MPG

LSD

(I) Vehicle	(J) Vehicle	Mean Difference (I-J)	Std. Error	Sig.	95% Confidence Interval	
					Lower Bound	Upper Bound
Mercedes	Oldsmobile	5.40000*	.35481	.000	4.6732	6.1268
	Peugeot	.50000	.35481	.170	-.2268	1.2268
	Volkswagon	-16.40000*	.35481	.000	-17.1268	-15.6732
Oldsmobile	Mercedes	-5.40000*	.35481	.000	-6.1268	-4.6732
	Peugeot	-4.90000*	.35481	.000	-5.6268	-4.1732
	Volkswagon	-21.80000*	.35481	.000	-22.5268	-21.0732
Peugeot	Mercedes	-.50000	.35481	.170	-1.2268	.2268
	Oldsmobile	4.90000*	.35481	.000	4.1732	5.6268
	Volkswagon	-16.90000*	.35481	.000	-17.6268	-16.1732
Volkswagon	Mercedes	16.40000*	.35481	.000	15.6732	17.1268
	Oldsmobile	21.80000*	.35481	.000	21.0732	22.5268
	Peugeot	16.90000*	.35481	.000	16.1732	17.6268

\*. The mean difference is significant at the .05 level.