

JMP Analysis of Blood Pressure Data

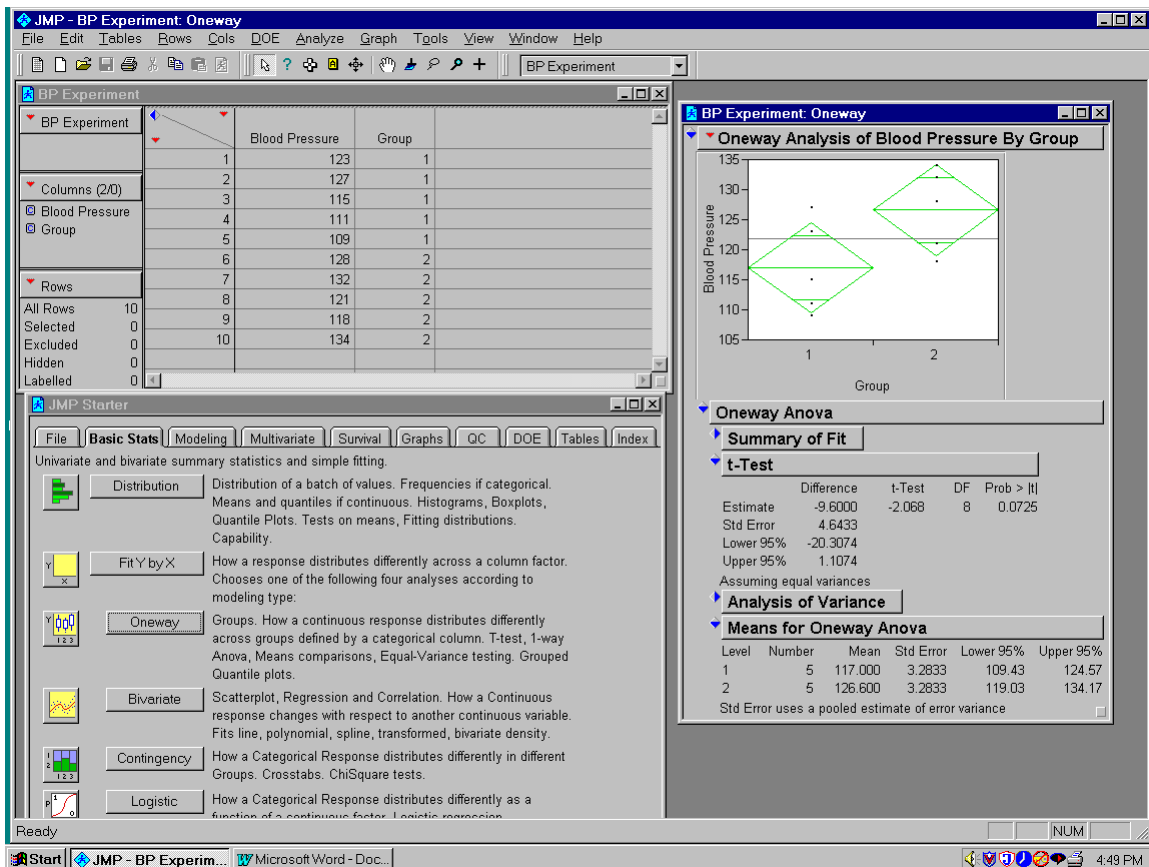
Enter the data into two columns: Blood Pressure and Group

Go to Basic Statistics - One way

Enter Blood Pressure for the Y-variable and Group for the X-variable

Click on OK

The output will have more than what is displayed below. You can hide output by clicking on the blue triangles at the left.



The value of the t-test statistic is -2.068 with a one-sided P-value of 0.03625. There is a statistically significant difference between the two groups in terms of average blood pressure level.