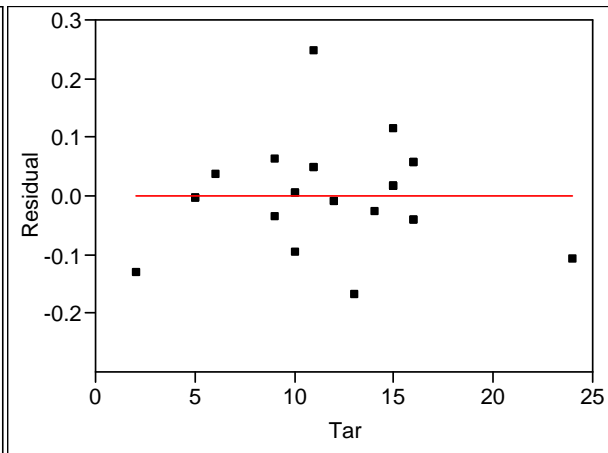
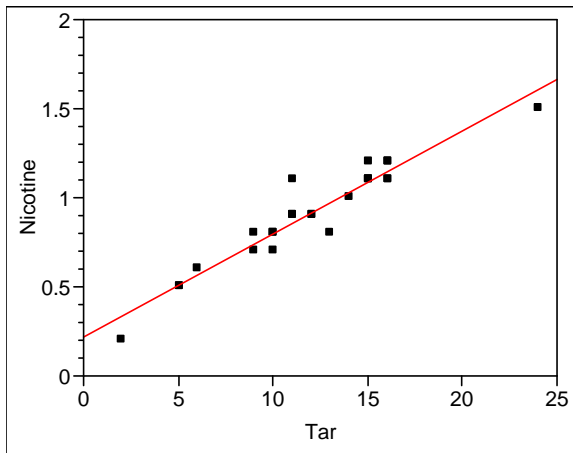
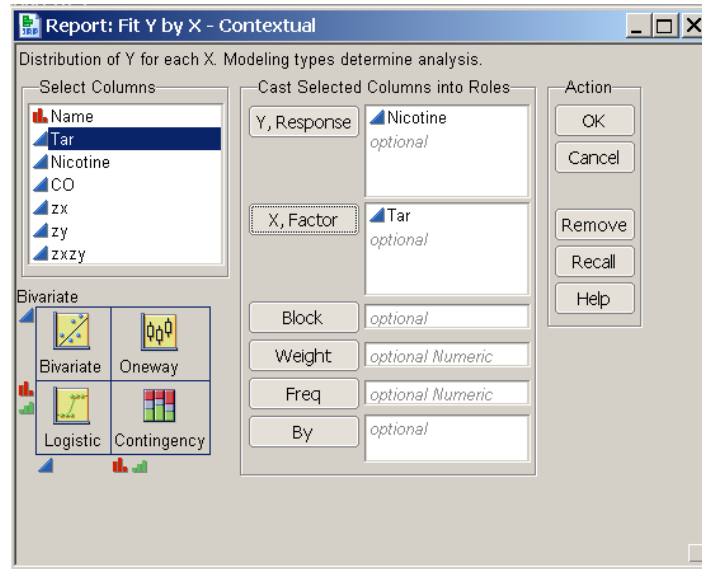


## JMP – Fit Y by X for the Cigarette Data



### Linear Fit

$$\text{Predicted Nicotine} = 0.2167029 + 0.0579947 * \text{Tar}$$

### Summary of Fit

RSquare	0.913912
RSquare Adj	0.910169
Root Mean Square Error	0.084295
Mean of Response	0.908
Observations (or Sum Wgts)	25

### Parameter Estimates

Term	Estimate	Std Error	t Ratio	Prob> t
Intercept	0.2167029	0.047344	4.58	0.0001
Tar	0.0579947	0.003711	15.63	<.0001