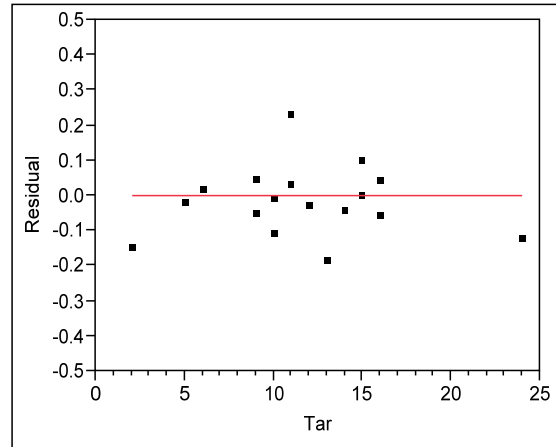
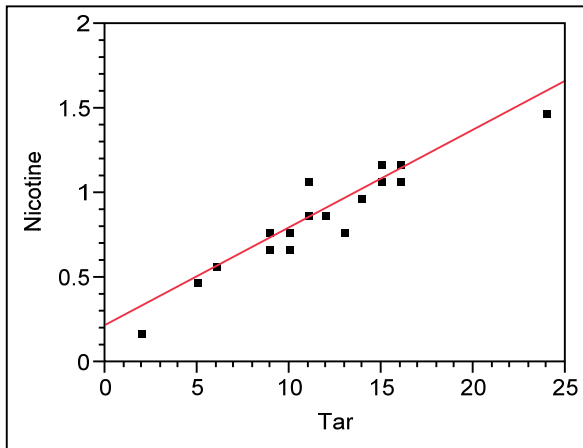


Predicting Nicotine from Tar in Cigarettes



Linear Fit

Predicted Nicotine = $0.2167029 + 0.0579947 \cdot \text{Tar}$

Summary of Fit

RSquare	0.913912
RSquare Adj	0.910169
Root Mean Square Error	0.084295
Mean of Response	0.908
Observations (or Sum Wgts)	25

Analysis of Variance

Source	DF	Sum of Squares	Mean Square	F Ratio
Model	1	1.7349703	1.73497	244.1680
Error	23	0.1634297	0.00711	Prob > F
C. Total	24	1.8984000		<.0001*

Parameter Estimates

Term	Estimate	Std Error	t Ratio	Prob> t
Intercept	0.2167029	0.047344	4.58	0.0001*
Tar	0.0579947	0.003711	15.63	<.0001*