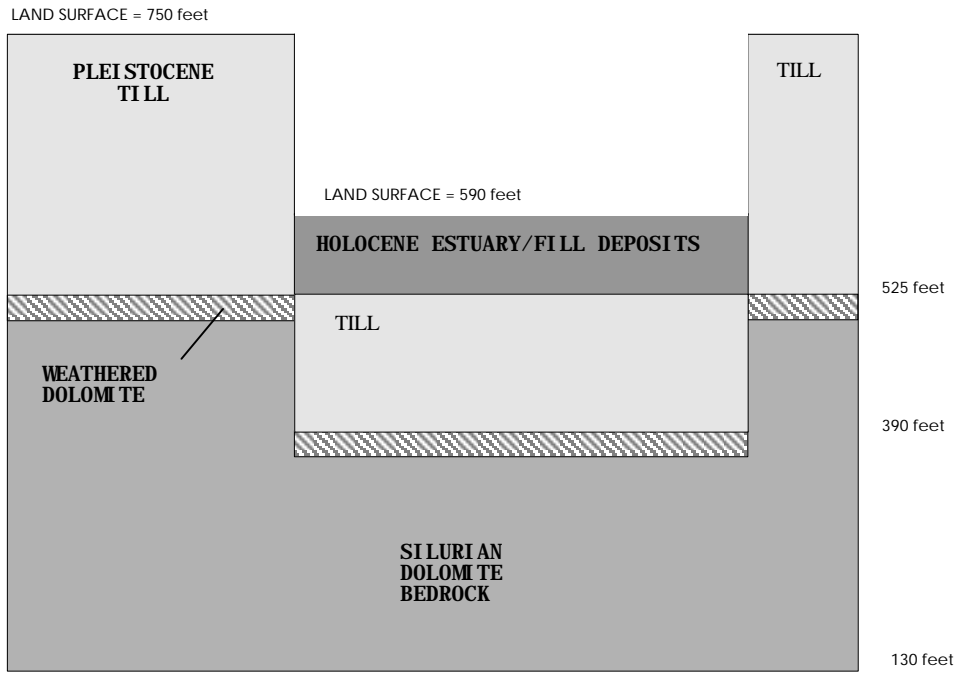


**Figure 5-1. Regional and local model domains.**  
**Dashed area: Recharge= 3.0 in/yr**  
**Undashed area: Recharge= 0.6 in/yr**



**Figure 5-2. Schematic of hydrostratigraphy (all elevations in meters above mean sea level).**

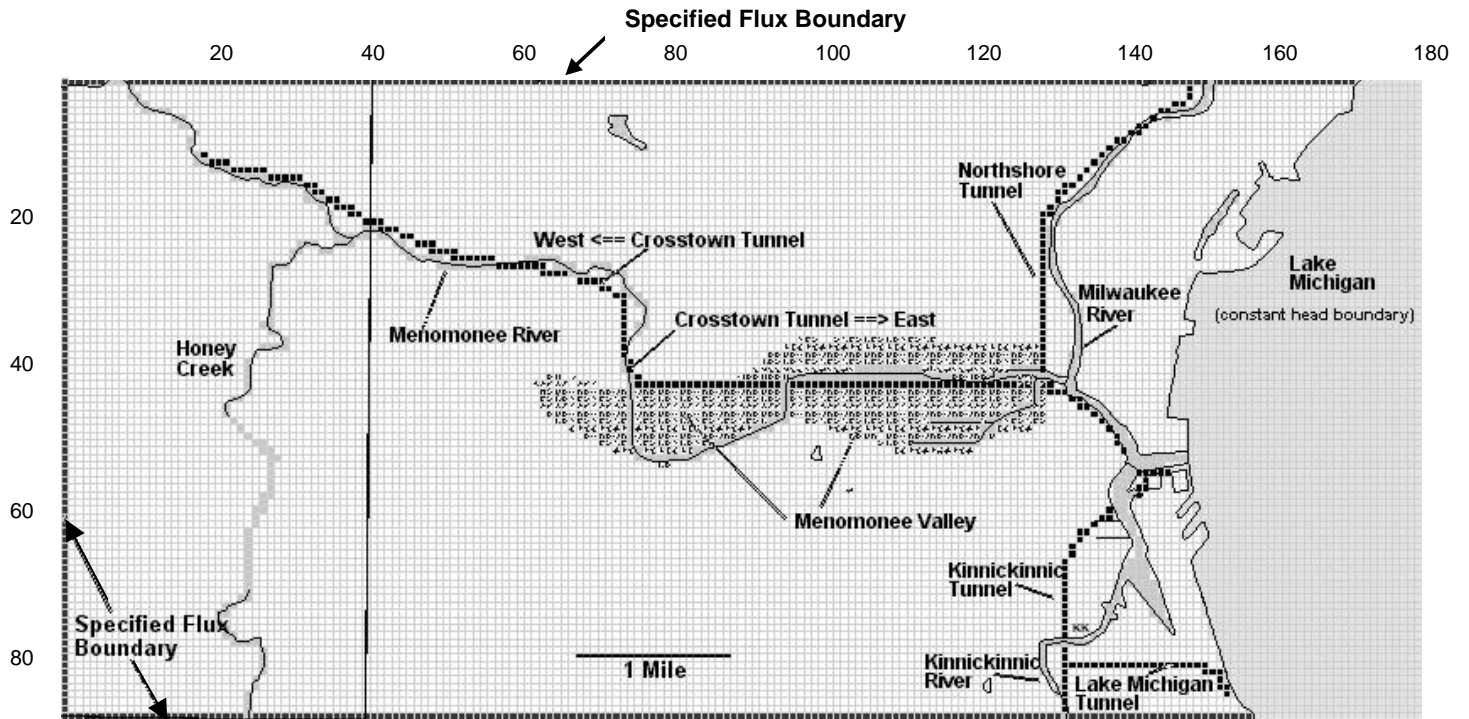
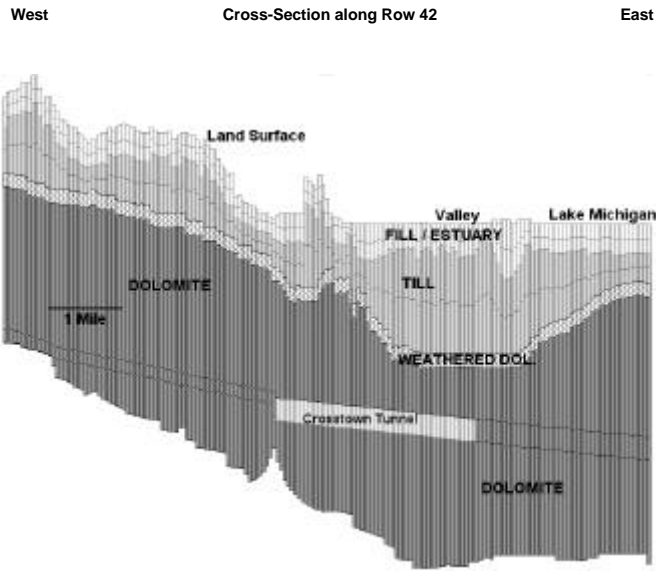


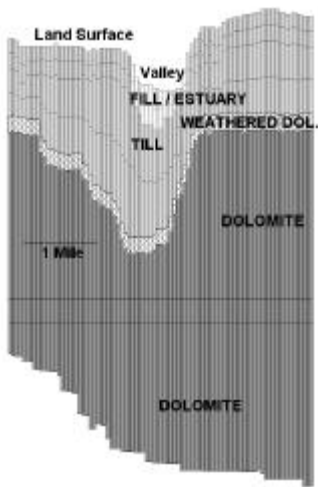
Figure 5-3. MODFLOW grid with surface water features and trace of tunnel segments.

(top)



**Figure 5-4. East/West MODFLOW section (row 42). Vertical exaggeration=50x.**

Cross-Section along Column 114  
South North



**Figure 5-5. North/South MODFLOW section (column 114). Vertical exaggeration=50x.**

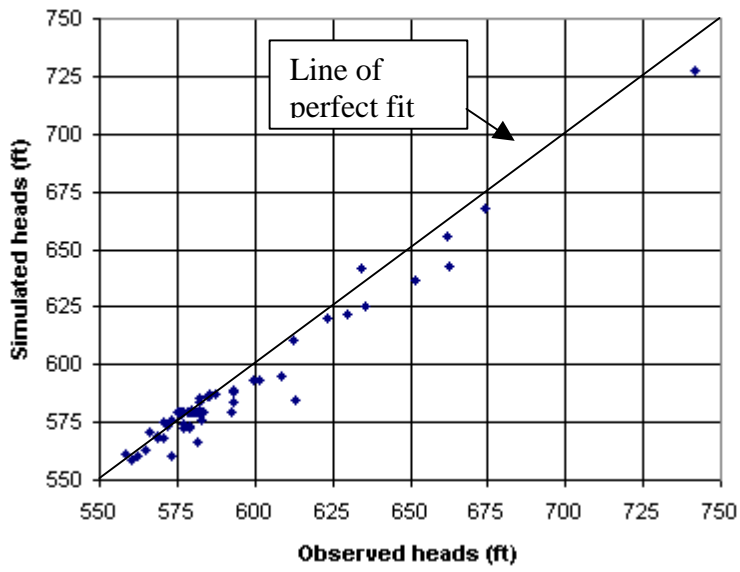
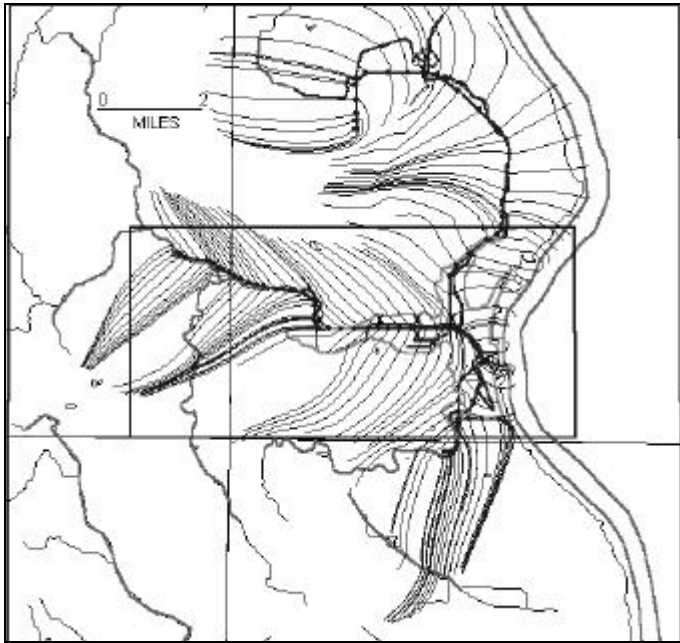
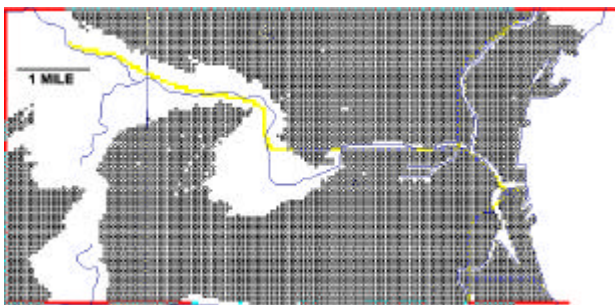


Figure 5

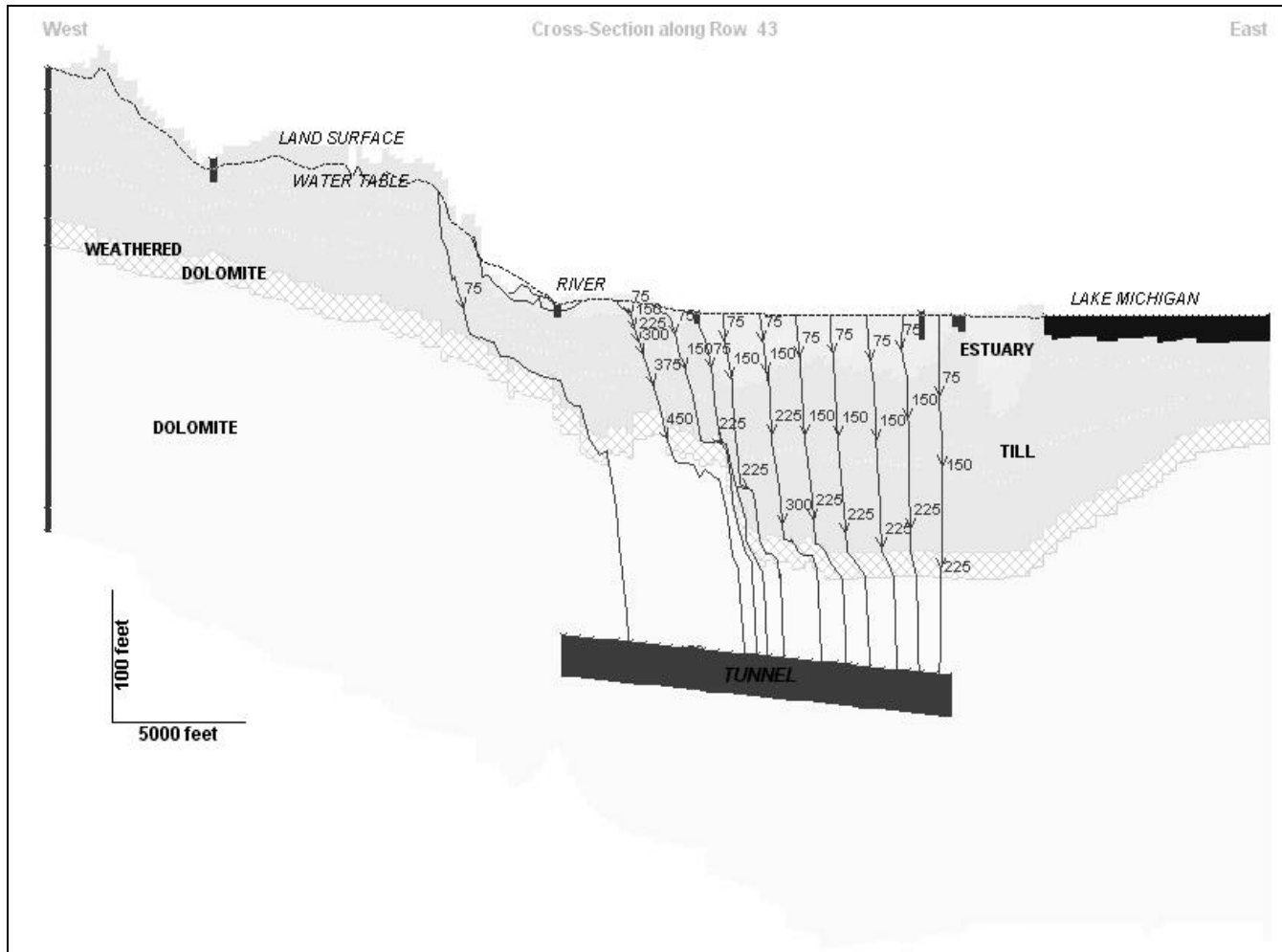


**Figure 6-15. GFLOW tunnel capture zone using backward tracking.**



**Figure 6-16. Tunnel capture (stippled area) and surface water capture (white area)**





**Figure 6-18. Section view of ground-water flow pattern below Menomonee Valley. Numbers next to arrows signify times of travel.**