

MWPS-74101

One-Car Garage

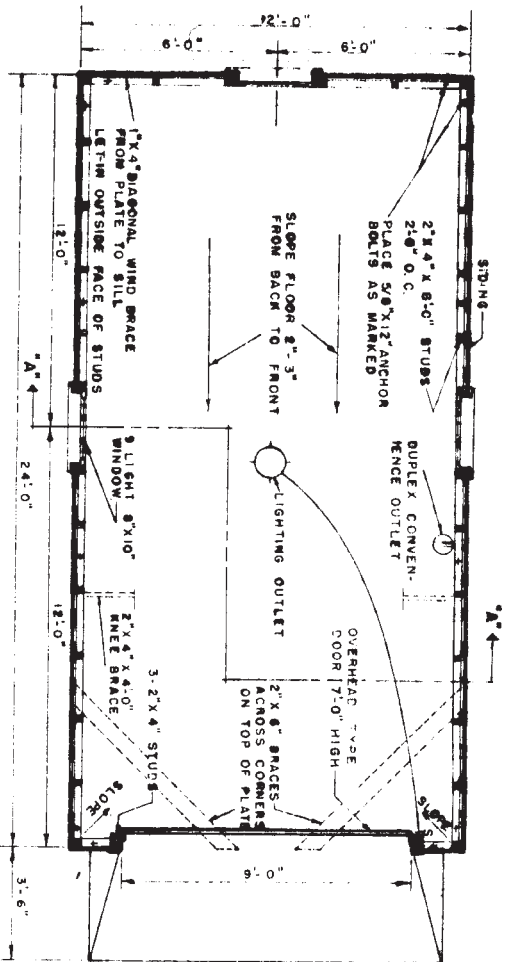
CAUTION!

Additional professional services will be required to tailor this plan to your situation, including but not limited to: assurance of compliance with codes and regulations; review of specifications for materials and equipment; supervision of site selection, bid letting and construction; and provision for utilities, waste management, roads or other access. **Furthermore, any deviation from the given specifications may result in structural failure, property damage, and personal injury including loss of life.**

WARRANTY DISCLAIMER

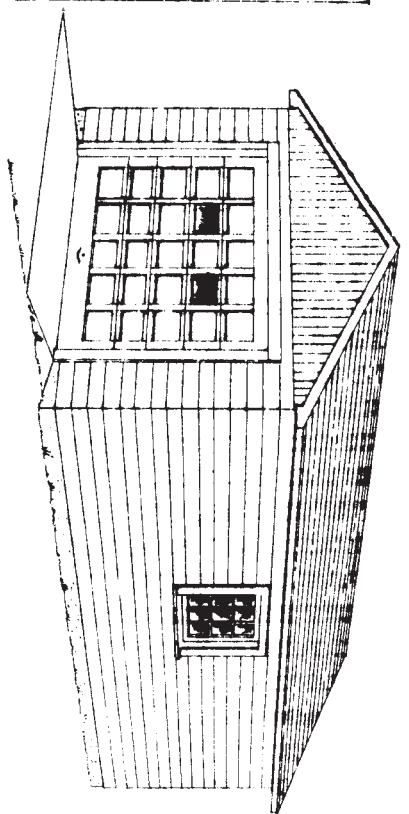
This plan provides conceptual information only. **Neither midwest plan service nor any of the cooperating land-grant universities, or their respective agents or employees, have made, and do not hereby make, any representation, warranty or covenant with respect to the specifications in this plan.** Additional professional services will be required to tailor this plan to your situation, including but not limited to: assurance of compliance with codes and regulations; review of specifications for materials and equipment; supervision of site selection, bid letting and construction; and provision for utilities, waste management, roads or other access.

MIDWEST PLAN SERVICE
Cooperative Extension Work in Agriculture and Home Economics and Agricultural Experiment Stations of North Central Region - USDA Cooperating
One-Car Garage
Title Page
MIDWEST PLAN NO. 74101

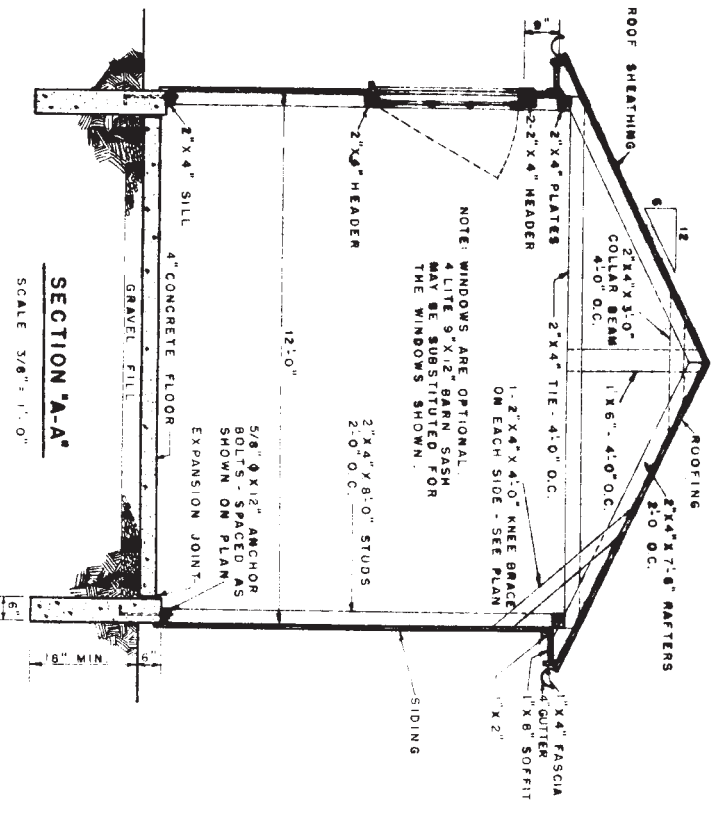


PLAN

NOTE: A SMALL END OR SIDE DOOR 2'-0" X 6'-8" MAY BE USED

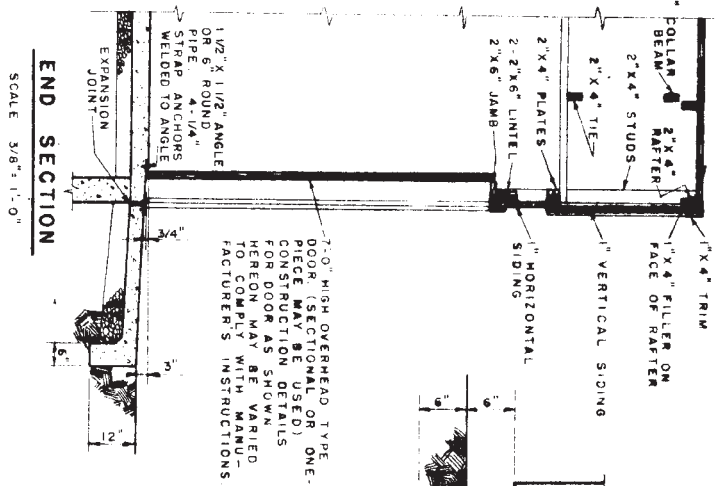


PERSPECTIVE



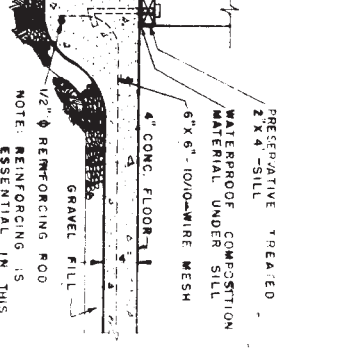
SECTION "A-A"

SCALE 3/8" = 1'-0"



END SECTION

SCALE 3/8" = 1'-0"



OPTIONAL FLOOR SECTION

SCALE 3/4" = 1'-0"

MIDWEST PLAN SERVICE
 Cooperative Extension Work in
 Agriculture and Home Economics
 of North Central Region - USDA Cooperating

ONE-CAR GARAGE

Midwest Plan No. 74501