

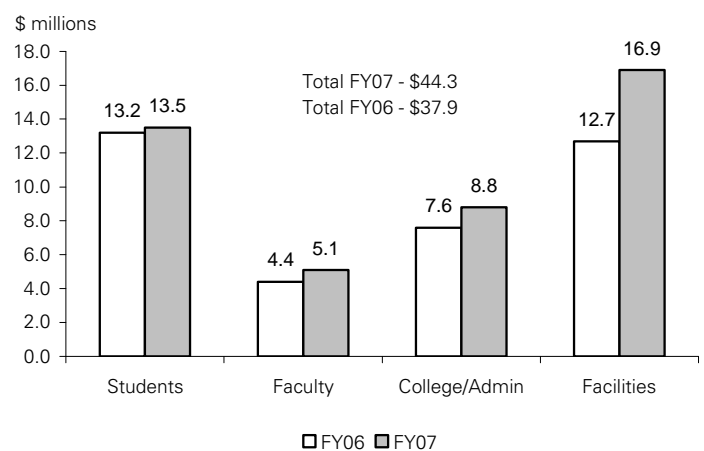
**GENERAL FUND OPERATING REVENUES AND EXPENDITURES - JULY**

	FY2008 Approved Budget	Actual FY2008 YTD	FY2008 Actual % to Budget	YTD Difference FY08-FY07
<b>Revenues</b>				
State Appropriations	\$267,358,107	\$22,279,845	8.3%	\$2,192,842
Tuition and Fees	182,354,627	11,162,784	6.1%	653,635
Reimbursed Indirect Cost	17,299,180	2,066,867	11.9%	134,813
Interest	1,820,000	59,510	3.3%	(3,954)
Federal Support	12,828,617	1,665,935	13.0%	735,238
Sales and Services	10,000	0	0.0%	0
Other Income	1,511,881	87,453	5.8%	4,747
<b>Total Revenues</b>	<b>\$483,182,412</b>	<b>\$37,322,394</b>	<b>7.7%</b>	<b>\$3,717,321</b>
<b>Expenditures</b>	<b>\$483,182,412</b>	<b>\$32,312,709</b>	<b>6.7%</b>	<b>\$2,894,811</b>

**ISU FOUNDATION GIFT ACTIVITY - JULY**

	FY08 Target (\$)	FY08 YTD Production
Agriculture & Life Sciences	18,000,000	6,043,767
Business	7,000,000	518,506
Design	1,250,000	305,190
Engineering	20,000,000	196,346
Human Sciences	2,500,000	91,755
Liberal Arts and Sciences	10,000,000	50,029
Veterinary Medicine	5,680,000	1,386,318
Alumni Association	200,000	79,115
Athletics	20,600,000	7,889,210
Auxiliary Services	400,000	79,430
Extension	500,000	7,625
Student Affairs	5,000,000	443,558
University Library	1,000,000	291,018
Other	1,000,000	2,860,047
<b>Total</b>	<b>\$110,000,000</b>	<b>\$20,241,914</b>

**GIFT FUNDS EXPENDED BY ISU**



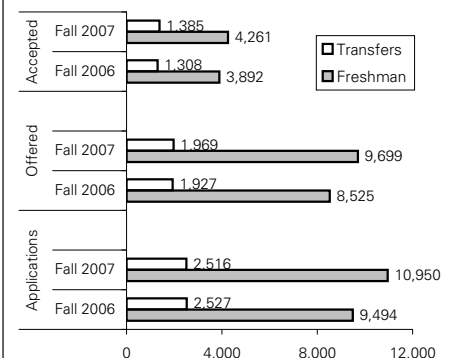
**SPONSORED FUNDING AWARDED - JULY**

Purpose	FY2007	FY2008	% Change	Source	FY2007	FY2008	% Change
Research	\$5,539,394	\$8,924,760	61.1%	Federal	\$6,496,162	\$6,006,378	-7.5%
Public Service & Extension	838,790	1,769,150	110.9%	State and Local Government	773,810	4,661,024	502.4%
Education*	116,199	1,150,287	889.9%	Business and Corporations	944,718	218,904	-76.8%
Student Financial Aid	0	26,374	N/A	Foundations and Associations	88,593	339,789	283.5%
Building Funds	0	0	N/A	Individuals	0	125,000	N/A
Equipment	0	170,000	N/A	Universities and Colleges	296,876	784,179	164.1%
Department & Administrative Support	0	140,000	N/A	Other	215,224	79,558	-63.0%
Miscellaneous	2,321,000	34,261	-98.5%				
<b>Total</b>	<b>\$8,815,383</b>	<b>\$12,214,832</b>	<b>38.6%</b>	<b>Total</b>	<b>\$8,815,383</b>	<b>\$12,214,832</b>	<b>38.6%</b>

\*This category includes instruction, training, fellowships and scholarships.

**APPLICATIONS AND ADMISSIONS AS OF AUGUST 1 FOR FALL 2007**

	Applications		Admissions Offered		Admissions Accepted	
	Fall 2006	Fall 2007	Fall 2006	Fall 2007	Fall 2006	Fall 2007
<b>Undergraduate</b>						
Freshman	9,494	10,950	8,525	9,699	3,892	4,261
Transfers	2,527	2,516	1,927	1,969	1,308	1,385
<b>Total</b>	<b>12,021</b>	<b>13,466</b>	<b>10,452</b>	<b>11,668</b>	<b>5,200</b>	<b>5,646</b>
Percent Non-residents	46.2%	50.3%	45.4%	48.6%	25.9%	27.6%
<b>Veterinary Medicine*</b>	648	802	184	205	123	132
Percent Non-residents	82.9%	85.3%	67.9%	66.8%	53.7%	50.8%
<b>Graduate</b>						
Domestic	1,401	1,471	714	720		
International	2,916	3,556	458	467		
<b>Total</b>	<b>4,317</b>	<b>5,027</b>	<b>1,172</b>	<b>1,187</b>	not reported	
Percent Non-residents	86.6%	88.0%	69.9%	70.2%		



\*Does not include students enrolled in the Nebraska-Lincoln Institute of Agriculture and Natural Resources (UNL) Program.

**AVERAGE A&B-BASE SALARY INCREASE BY RANK**

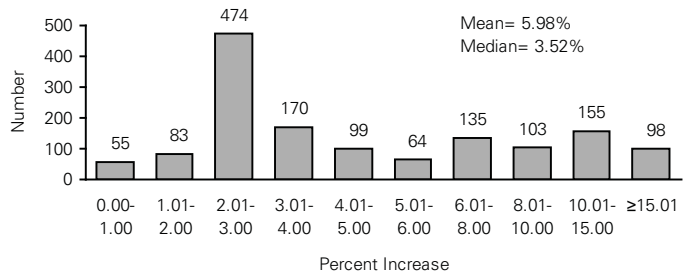
Rank	Total	Women	Men	Minority	Non-Minority
Prof	6.68%	8.14%	6.40%	7.84%	6.46%
Assoc Prof	6.74%	6.77%	6.72%	6.51%	6.79%
Asst Prof	4.72%	4.73%	4.71%	4.66%	4.74%
Instr	3.91%	5.21%	2.76%	2.15%	4.09%
Lectr	4.07%	3.65%	4.70%	3.15%	4.20%
All A & B	5.98%	5.96%	5.98%	6.06%	5.96%

**AVERAGE P&S SALARY INCREASE BY PAY GRADE**

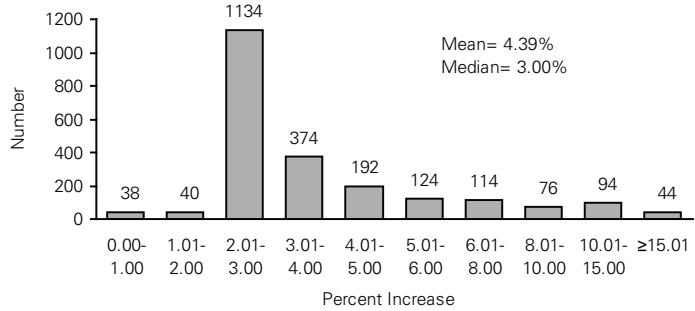
Pay Grade	Total	Women	Men	Minority	Non-Minority
P11	4.57%	4.54%	4.69%	5.70%	4.44%
P12	4.56%	4.34%	5.07%	5.47%	4.52%
P13	4.58%	4.32%	5.08%	4.61%	4.58%
P14	4.62%	4.18%	5.14%	5.33%	4.55%
P15	4.22%	4.32%	4.15%	4.21%	4.23%
P16	4.60%	4.59%	4.60%	4.18%	4.64%
P17	3.99%	3.83%	4.07%	3.76%	4.01%
P18	4.02%	4.35%	3.76%	3.76%	4.06%
P19	4.48%	5.97%	3.82%	3.44%	4.54%
P20	4.57%	4.41%	4.66%	6.62%	3.89%
K-Base	1.85%	3.00%	1.62%	—	2.22%
All Grades	4.39%	4.31%	4.48%	4.55%	4.38%

**DISTRIBUTION OF FY 2008 SALARY INCREASES**

**A & B - Base (N = 1,436)**



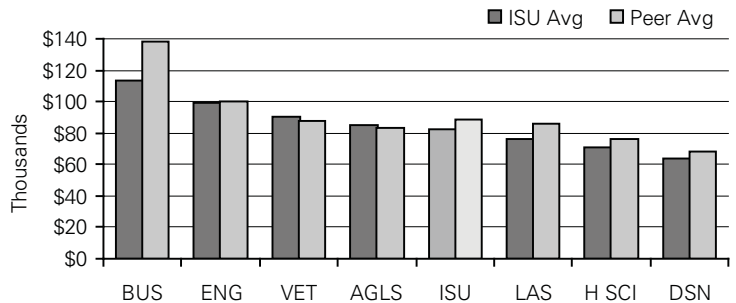
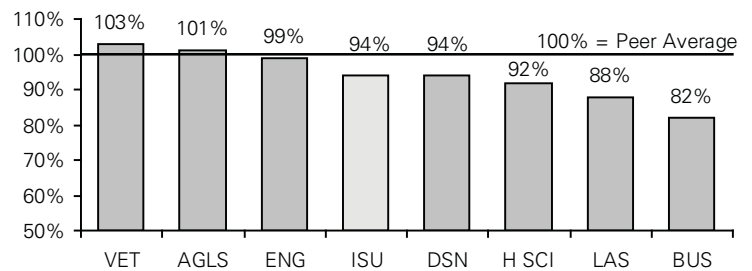
**P & S - Base (N = 2,230)**



**INDEX OF AVERAGE ISU FACULTY SALARIES COMPARED TO PEER LAND GRANT UNIVERSITIES**

FY	Prof	Assoc Prof	Asst Prof	All Ranks
1995	1.01	1.03	0.98	1.01
1996	1.01	1.02	0.97	1.01
1997	1.00	1.00	0.97	0.99
1998	1.00	1.01	0.97	1.00
1999	0.99	1.00	0.97	0.99
2000	0.98	1.00	0.99	0.99
2001	0.97	0.98	0.98	0.98
2002	0.96	0.98	0.97	0.97
2003	0.95	0.97	0.96	0.96
2004	0.96	0.97	0.96	0.96
2005	0.93	0.97	0.96	0.95
2006	0.94	0.96	0.95	0.95
2007	0.93	0.94	0.95	0.94

**ISU & PEER LAND GRANT UNIVERSITIES FACULTY SALARY COMPARISONS BY COLLEGE, 2006-2007**  
(three ranks combined)



**INDEX OF AVERAGE FACULTY SALARIES**

**Women Compared to Men**

FY	Prof	Assoc Prof	Asst Prof
2000	0.97	0.96	1.00
2001	0.97	0.97	1.00
2002	0.98	0.97	0.99
2003	0.98	0.97	0.98
2004	0.98	0.97	0.99
2005	0.98	0.98	0.98
2006	0.99	0.98	0.98
2007	0.98	0.96	1.00

**Minority Compared to Non-Minority**

FY	Prof	Assoc Prof	Asst Prof
2000	0.98	0.98	1.02
2001	0.97	0.99	1.00
2002	0.97	0.99	1.02
2003	0.99	1.01	1.01
2004	1.00	1.01	1.00
2005	0.98	1.00	1.00
2006	0.97	1.01	0.99
2007	0.99	0.99	1.00

**INDEX OF AVERAGE ISU P&S SALARIES COMPARED TO BENCHMARK POSITIONS AT OTHER INSTITUTIONS**

FY	Number of Benchmark Positions	Index
1997	86	0.98
1998	103	1.00
1999	122	0.98
2000	147	0.98
2001	153	0.99
2002	160	0.97
2003	163	0.97
2004	142	0.97
2005	142	0.97
2006	140	0.97
2007	132	0.98

# Average Faculty Salaries of AAU Universities, 2006-2007

Reflects ISU Rank Distribution (N = 1,210)

Institution	Three Ranks Combined	
	Average Salary	Salary Ranking
Harvard*	129,600	1
Stanford*	128,800	2
Cal Tech*	126,300	3
Penn*	123,100	4
Princeton*	122,200	5
Columbia*	122,100	6
MIT*	115,900	7
Northwestern*	114,200	8
Yale*	113,700	9
Cornell - Endowed*	113,100	10
New York Univ.*	112,300	11
Duke*	111,600	12
Wash Univ - St. Louis*	110,400	13
Emory*	108,300	14
Southern Cal*	106,700	15
Carnegie Mellon*	104,400	16
Rice*	103,700	17
Cal - Berkeley	102,300	18
Brown*	101,900	19
Michigan	101,500	20
Vanderbilt*	101,400	21
Cal - Los Angeles	101,200	22
Cornell - Contract (publ)	100,100	23
Virginia	99,900	24
North Carolina	98,800	25
Johns Hopkins*	97,800	26
Maryland	97,600	27
Rutgers	96,600	28
Texas	95,200	29
Cal - San Diego	94,900	30
Illinois	94,500	31
SUNY - Stony Brook	93,900	32
Penn State	93,800	33
Minnesota	92,400	34
Rochester*	92,300	35
Pittsburgh	92,000	36
SUNY - Buffalo	91,900	37
Cal - Irvine	91,700	38
Ohio State	91,500	39
Case Western*	91,100	40
Brandeis*	91,000	41
Cal - Santa Barbara	90,900	42
Tulane*	90,000	43
Cal - Davis	89,600	44
Washington	88,600	45
Michigan State	87,300	46
Colorado	87,000	47
Iowa	87,000	47
Indiana	86,600	49
Texas A&M	86,600	49
Purdue	86,200	51
Arizona	86,000	52
Wisconsin	85,300	53
Florida	84,400	54
Syracuse*	84,300	55
Kansas	82,800	56
Iowa State	82,300	57
Nebraska	81,400	58
Missouri	78,600	59
Oregon	72,300	60
Mean	98,148	

Reflects SUI Rank Distribution (N = 1,224)

Institution	Three Ranks Combined	
	Average Salary	Salary Ranking
Harvard*	130,400	1
Stanford*	129,500	2
Cal Tech*	126,800	3
Penn*	123,800	4
Princeton*	123,100	5
Columbia*	122,900	6
MIT*	116,400	7
Northwestern*	114,800	8
Yale*	114,400	9
Cornell - Endowed*	113,700	10
New York Univ.*	112,900	11
Duke*	112,200	12
Wash Univ - St. Louis*	111,000	13
Emory*	108,900	14
Southern Cal*	107,200	15
Carnegie Mellon*	104,800	16
Rice*	104,300	17
Cal - Berkeley	102,800	18
Brown*	102,500	19
Michigan	102,100	20
Vanderbilt*	102,100	20
Cal - Los Angeles	101,700	22
Cornell - Contract (publ)	100,500	23
Virginia	100,400	24
North Carolina	99,400	25
Johns Hopkins*	98,300	26
Maryland	98,000	27
Rutgers	97,200	28
Texas	95,600	29
Cal - San Diego	95,400	30
Illinois	95,000	31
SUNY - Stony Brook	94,400	32
Penn State	94,300	33
Minnesota	92,900	34
Rochester*	92,700	35
Pittsburgh	92,500	36
SUNY - Buffalo	92,400	37
Cal - Irvine	92,100	38
Ohio State	91,900	39
Case Western*	91,600	40
Brandeis*	91,400	41
Cal - Santa Barbara	91,400	41
Tulane*	90,500	43
Cal - Davis	90,100	44
Washington	88,900	45
Michigan State	87,800	46
Colorado	87,400	47
Iowa	87,400	47
Indiana	87,100	49
Texas A&M	87,000	50
Purdue	86,600	51
Arizona	86,400	52
Wisconsin	85,700	53
Florida	84,900	54
Syracuse*	84,700	55
Kansas	83,200	56
Iowa State	82,600	57
Nebraska	81,800	58
Missouri	79,000	59
Oregon	72,600	60
Mean	98,657	

The private universities are marked with an asterisk (\*)

North Carolina State, ISU's peer but not a member of AAU, is at \$85,300