

GENERAL FUND OPERATING REVENUES AND EXPENDITURES (JULY-APRIL)

	FY2008 Approved Budget	Actual FY2008 YTD	FY2008 Actual % to Budget	YTD Difference FY08-FY07
Revenues				
State Appropriations	\$267,358,107	\$222,798,423	83.3%	\$20,808,438
Tuition and Fees	182,354,627	190,554,109	104.5%	12,659,369
Reimbursed Indirect Cost	17,299,180	14,711,057	85.0%	956,366
Interest	1,820,000	1,783,809	98.0%	105,759
Federal Support	12,828,617	9,872,648	77.0%	1,370,695
Sales and Services	10,000	0	0.0%	0
Other Income	1,511,881	1,647,859	109.0%	116,157
Total Revenues	\$483,182,412	\$441,367,905	91.3%	\$36,016,784
Expenditures	\$483,182,412	\$392,892,631	81.3%	\$20,899,249

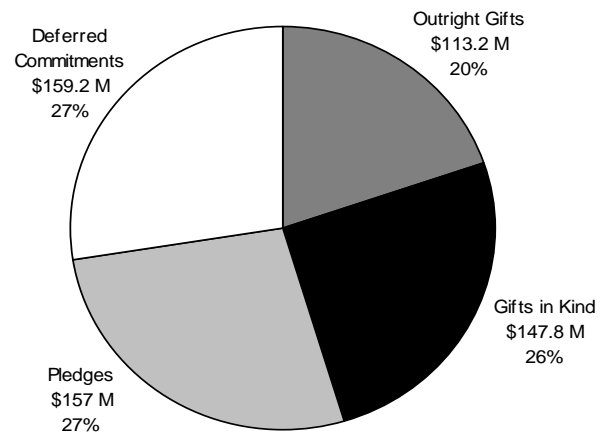
**ISU FOUNDATION FUNDRAISING RESULTS
COLLEGE/UNIT REPORT (JULY-APRIL)**

	FY08 Target (\$)	FY08 YTD Production
Agriculture & Life Sciences	18,000,000	20,476,168
Business	7,000,000	9,856,383
Design	1,250,000	1,076,433
Engineering	20,000,000	17,047,836
Human Sciences	4,500,000	3,455,176
Liberal Arts and Sciences	10,000,000	19,669,956
Veterinary Medicine	5,680,000	13,342,476
Alumni Association	500,000	1,160,787
Athletics	20,600,000	15,708,428
Extension	500,000	416,753
Iowa State Center	166,000	56,905
Reiman Gardens	300,000	374,508
Student Affairs	2,500,000	11,084,856
University Library	1,000,000	902,886
University Museums	300,000	453,565
Other	17,704,000	7,822,075
Less: Interdisciplinary Gifts		(770,000)
Total	\$110,000,000	\$122,135,191

CAMPAIGN PRODUCTION

Goal: \$800 Million

Gifts and Commitments: \$577.2 Million



SPONSORED FUNDING AWARDED (JULY-APRIL)

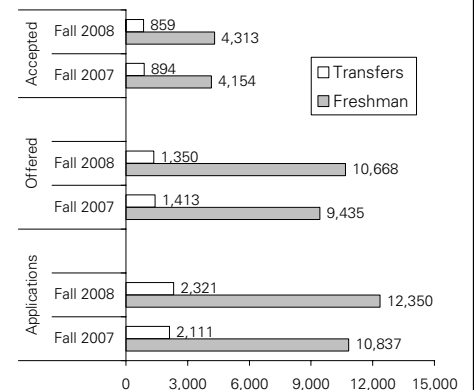
Purpose	FY2007	FY2008	% Change	Source	FY2007	FY2008	% Change
Research	\$117,223,825	\$128,893,980	10.0%	Federal*	\$102,994,225	\$109,547,633	6.4%
Public Service & Extension	13,744,465	15,693,649	14.2%	State and Local Government	28,983,943	21,865,011	-24.6%
Education***	13,777,795	13,743,534	-0.2%	Business and Corporations	17,273,465	28,829,391	66.9%
Student Financial Aid	11,887,564	13,592,149	14.3%	Foundations and Associations**	11,167,550	11,537,244	3.3%
Building Funds	8,109,890	8,767,893	8.1%	Individuals	130,000	125,000	-3.8%
Equipment	1,037,845	1,355,220	30.6%	Universities and Colleges	8,920,545	10,259,951	15.0%
Department & Administrative Support	1,468,371	1,774,959	20.9%	Other	2,751,523	3,323,352	20.8%
Miscellaneous	4,971,496	1,666,198	-66.5%				
Total	\$172,221,251	\$185,487,582	7.7%	Total	\$172,221,251	\$185,487,582	7.7%

*Federal Funding - includes All Formula Funding, Federal Directed Funding, and Regular Grant and Contract Funding
 **Foundations & Associations - includes both funding from the ISU Foundation and from foundations external to the University
 ***Education - includes instruction, training, fellowships and scholarships

APPLICATIONS AND ADMISSIONS AS OF MAY 1 FOR FALL 2008

	Applications		Admissions Offered		Admissions Accepted	
	Fall 2007	Fall 2008	Fall 2007	Fall 2008	Fall 2007	Fall 2008
Undergraduate						
Freshman	10,837	12,350	9,435	10,668	4,154	4,313
Transfers	2,111	2,321	1,413	1,350	894	859
Total	12,948	14,671	10,848	12,018	5,048	5,172
Percent Non-residents	51.4%	53.6%	49.0%	53.9%	28.7%	32.7%
Veterinary Medicine*	820	962	179	125	110	110
Percent Non-residents	86.1%	88.5%	65.4%	52.8%	46.4%	49.1%
Graduate						
Domestic	1,153	1,076	506	487		not reported
International	3,513	3,935	401	374		not reported
Total	4,666	5,011	907	861		
Percent Non-residents	91.7%	93.2%	79.7%	79.0%		

*Does not include students enrolled in the Nebraska-Lincoln Institute of Agriculture and Natural Resources (UNL) Program.

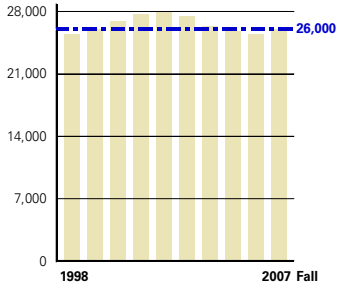


Forward thinking. The Iowa State University 2005-2010 Strategic Plan

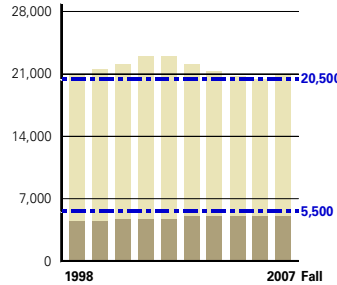
April 2008 Progress Report

May 16, 2008

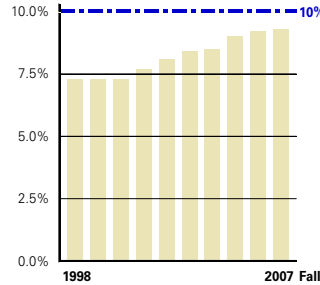
Targets are shown in blue



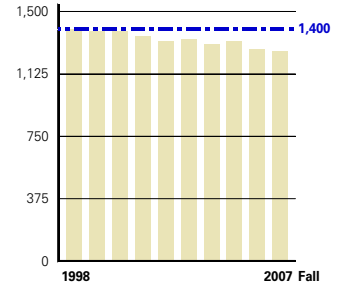
Enrollment - Headcount
All students



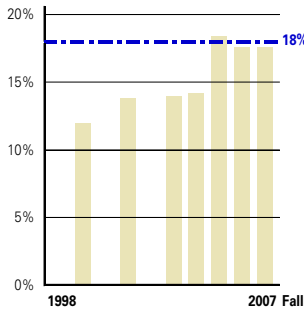
Enrollment - Headcount
Undergraduate target: 20,500 (light color)
Graduate & Prof. target: 5,500 (dark color)



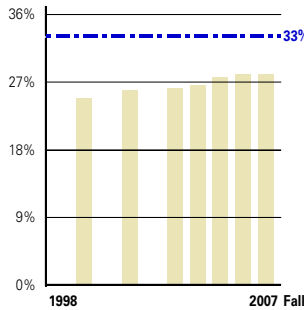
U.S. Students of Color
Percent of total enrollment
African American, American Indian/Alaskan
Native, Asian/Pacific Islander, & Hispanic



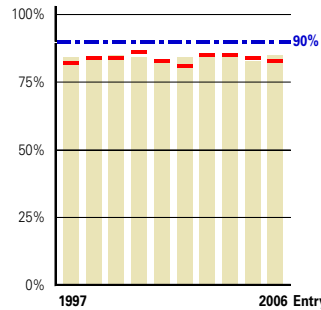
Tenured & Tenure Eligible Faculty
Full time equivalent



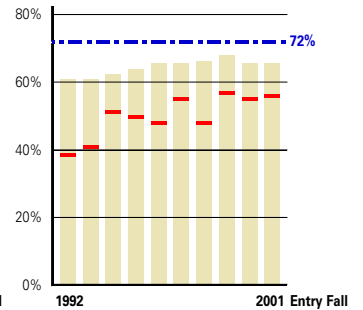
Faculty of Color
Percent of Tenured & Tenure Eligible Faculty
African American, American Indian/Alaskan
Native, Asian/Pacific Islander, & Hispanic



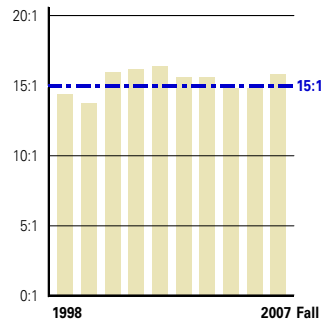
Women Faculty
Percent of Tenured & Tenure Eligible Faculty



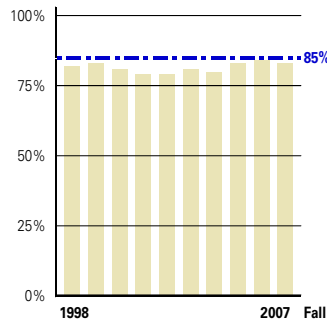
One-Year Retention Rate
Direct from high school undergraduates
All students (light color)
Students of color (red lines)



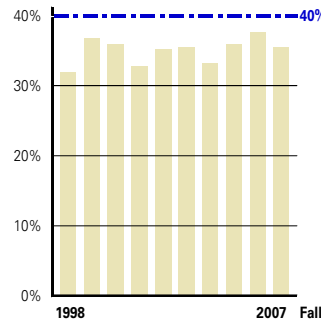
Six-Year Graduation Rate
Direct from high school undergraduates
All students (light color)
Students of color (red lines)



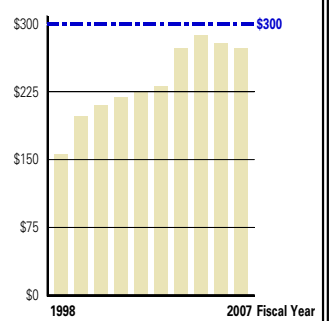
Student-to-Faculty Ratio
All full time equivalent students
All full time equivalent instructional faculty



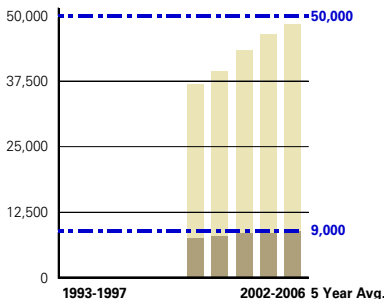
Class Size - Under 50
Percent of total class sections



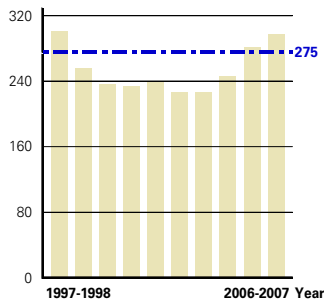
Class Size - Under 20
Percent of total class sections



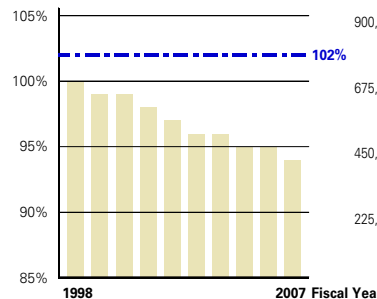
Sponsored Funding Awards
Millions of dollars



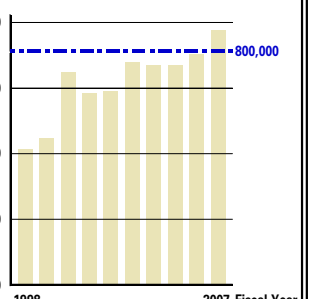
Faculty Articles & Citations
Articles published by ISU faculty & citations
reported in ISI Index
Citations (light color)
Articles (dark color)



Doctoral Degrees Awarded
Total for fall, spring, and summer



Faculty Salaries
Comparative index
At 100%, mean faculty salaries at ISU equal
mean faculty salaries at peer institutions



Iowans Served by ISU Extension
Total people