

**GENERAL FUND OPERATING REVENUES AND EXPENDITURES (JULY-JANUARY)**

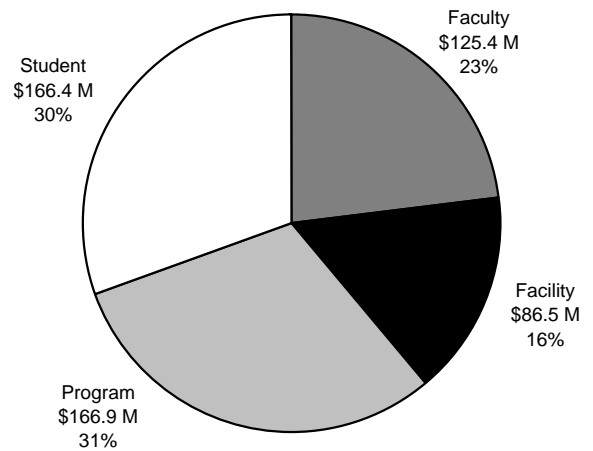
	FY2008 Approved Budget	Actual FY2008 YTD	FY2008 Actual % to Budget	YTD Difference FY08-FY07
Revenues				
State Appropriations	\$267,358,107	\$155,958,897	58.3%	\$15,349,906
Tuition and Fees	182,354,627	179,086,045	98.2%	10,339,710
Reimbursed Indirect Cost	17,299,180	10,320,227	59.7%	201,029
Interest	1,820,000	1,059,377	58.2%	(41,971)
Federal Support	12,828,617	6,769,355	52.8%	3,757,223
Sales and Services	10,000	0	0.0%	0
Other Income	1,511,881	1,179,988	78.0%	89,010
<b>Total Revenues</b>	<b>\$483,182,412</b>	<b>\$354,373,889</b>	<b>73.3%</b>	<b>\$29,694,907</b>
Expenditures	\$483,182,412	\$280,532,447	58.1%	\$12,035,874

**ISU FOUNDATION FUNDRAISING RESULTS  
COLLEGE/UNIT REPORT (JULY-JANUARY)**

	FY08 Target (\$)	FY08 YTD Production
Agriculture & Life Sciences	18,000,000	18,077,100
Business	7,000,000	9,703,033
Design	1,250,000	632,004
Engineering	20,000,000	11,543,176
Human Sciences	4,500,000	2,365,532
Liberal Arts and Sciences	10,000,000	10,152,725
Veterinary Medicine	5,680,000	12,257,451
Alumni Association	500,000	699,127
Athletics	20,600,000	9,833,052
Extension	500,000	149,867
Iowa State Center	166,000	60,325
Reiman Gardens	300,000	282,214
Student Affairs	2,500,000	5,381,183
University Library	1,000,000	626,698
University Museums	300,000	424,880
Other	17,704,000	7,441,687
Less: Interdisciplinary Gifts		(770,000)
<b>Total</b>	<b>\$110,000,000</b>	<b>\$88,860,054</b>

**CAMPAIGN PRODUCTION**

**Goal: \$800 Million**  
**Gifts and Commitments: \$545.2 Million**



**SPONSORED FUNDING AWARDED (JULY-JANUARY)**

Purpose	FY2007			FY2008			Source	FY2007			FY2008				
	Amount	% Change	Source	Amount	% Change	Source		Amount	% Change	Source	Amount	% Change			
Research	\$79,122,600	-3.6%	Federal*	\$76,274,858	-5.9%	Federal*	\$67,498,799	-21.4%	State and Local Government	\$9,853,636	41.8%	State and Local Government	\$13,975,972	-8.6%	Business and Corporations
Public Service & Extension	9,853,636	41.8%	State and Local Government	13,975,972	-8.6%	Business and Corporations	14,589,377	-71.4%	Foundations and Associations**	13,265,486	-51.6%	Business and Corporations	13,338,761	-3.8%	Individuals
Education***	13,265,486	-51.6%	Business and Corporations	6,420,632	-81.6%	Universities and Colleges	6,440,948	29.1%	Other	6,789,128	5.0%	Foundations and Associations**	1,840,704	27.0%	Universities and Colleges
Student Financial Aid	6,789,128	5.0%	Foundations and Associations**	7,125,380	49.1%	Other	6,440,948	-3.8%	Individuals	4,188,514	N/A	Individuals	130,000	-	Individuals
Building Funds	4,188,514	N/A	Individuals	0	-	Individuals	130,000	-	Individuals	1,030,845	-81.6%	Universities and Colleges	5,572,251	27.0%	Universities and Colleges
Equipment	1,030,845	-81.6%	Universities and Colleges	190,000	-81.6%	Universities and Colleges	5,572,251	27.0%	Universities and Colleges	1,468,371	14.1%	Other	1,756,335	29.1%	Other
Department & Administrative Support	1,468,371	14.1%	Other	1,674,959	14.1%	Other	1,756,335	29.1%	Other	4,527,100	-64.5%	Total	\$120,245,680	-10.8%	Total
Miscellaneous	4,527,100	-64.5%	Total	1,607,522	-64.5%	Total	\$120,245,680	-10.8%	Total	\$120,245,680	-10.8%	Total	\$107,269,323	-10.8%	Total
<b>Total</b>	<b>\$120,245,680</b>	<b>-10.8%</b>	<b>Total</b>	<b>\$107,269,323</b>	<b>-10.8%</b>	<b>Total</b>	<b>\$120,245,680</b>	<b>-10.8%</b>	<b>Total</b>	<b>\$120,245,680</b>	<b>-10.8%</b>	<b>Total</b>	<b>\$107,269,323</b>	<b>-10.8%</b>	<b>Total</b>

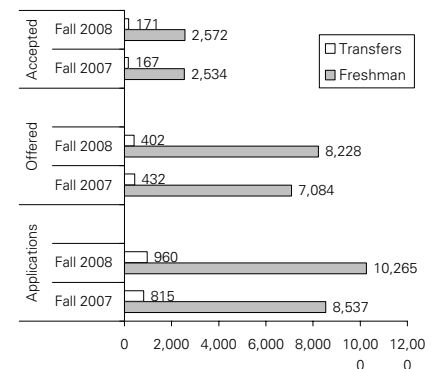
\*Federal Funding - includes All Formula Funding, Federal Directed Funding, and Regular Grant and Contract Funding

\*\*Foundations & Associations - includes both funding from the ISU Foundation and from foundations external to the University

\*\*\*Education - includes instruction, training, fellowships and scholarships

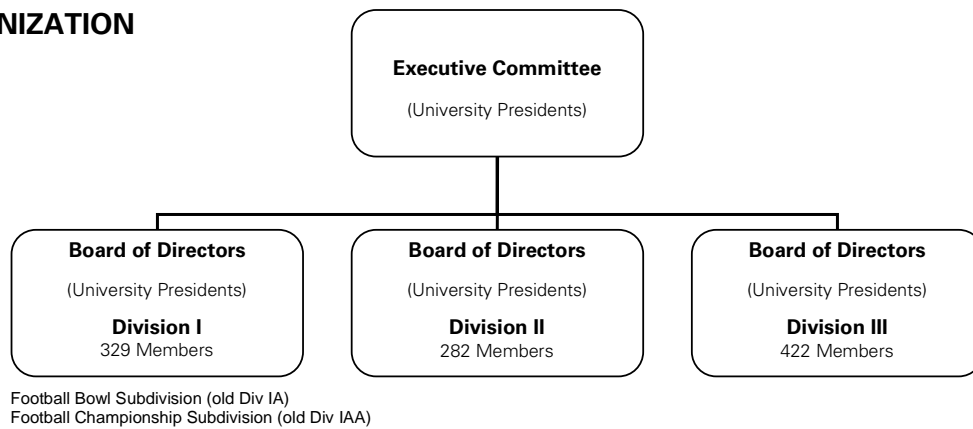
**APPLICATIONS AND ADMISSIONS AS OF FEBRUARY 1 FOR FALL 2008**

	Applications		Admissions Offered		Admissions Accepted	
	Fall 2007	Fall 2008	Fall 2007	Fall 2008	Fall 2007	Fall 2008
<b>Undergraduate</b>						
Freshman	8,537	10,265	7,084	8,228	2,534	2,572
Transfers	815	960	432	402	167	171
Total	9,352	11,225	7,516	8,630	2,701	2,743
Percent Non-residents	52.7%	56.8%	50.9%	55.6%	30.2%	30.9%
<b>Veterinary Medicine*</b>	not available yet		not available yet		not available yet	
Percent Non-residents	not available yet		not available yet		not available yet	
<b>Graduate</b>						
Domestic	193	191	26	37	not reported	
International	3,124	3,748	76	105	not reported	
Total	3,317	3,939	102	142		
Percent Non-residents	94.2%	95.2%	74.5%	73.9%		



\*Does not include students enrolled in the Nebraska-Lincoln Institute of Agriculture and Natural Resources (UNL) Program.

## NCAA ORGANIZATION



### GRADUATION SUCCESS RATE (GSR)

- Historical view of academic success
- Based on a six-year window
- Similar to the 6-yr federal graduation rate (FGR), but it accounts for student-athletes who transfer in and out

### ACADEMIC PROGRESS RATE (APR)

- Measures real-time assessment of a team's academic performance
- Based on the most recent 4 yrs of eligibility and retention data
- A 1000 point scale
- 925 APR score roughly correlates with a 50% GSR
- Teams with APR <925 suffer penalties
- Data collection began in 2003/04; 2006/07 is the 4th year
- Prior to 2006/07, adjustments were made to the calculations because of insufficient statistics for small squad sports

### CALCULATION OF GSR AND COMPARISON TO FGR

- NCAA Graduation Success Rate (GSR) – percentage of scholarship student-athletes who graduated from the institution over four years worth of cohort classes
  - Includes all scholarship student-athletes entering the institution, plus transfers in, walk-ons who eventually earn athletics aid and non-qualifiers who earn athletics aid
- Federal Graduation Rate (FGR) – percentage of scholarship student athletes who entered in the fall semester on athletics aid and who graduated from the institution
  - Counts anyone who transferred, left early for professional sports or for any other reason as failing to graduate

### CALCULATION OF APR

- Only scholarship student-athletes included in the calculation
- A total of 4 APR points can be earned by each student-athlete per year
  - 1 APR point if academically eligible to compete the next semester and meeting NCAA's standards for progress towards a degree
  - 1 APR point if retained by the program into the next semester (staying enrolled)

### EXAMPLES OF APR CALCULATIONS

- Student is academically eligible and remains at the school for both semesters - 4/4
- Student is eligible fall semester and plays basketball through the final game of the spring, and then drops out of school without completing classes (2/2 in fall; 0/2 in spring)
- Student is eligible fall semester and plays basketball, is ruled academically ineligible for the spring, but stays in the program and regains eligibility for the following fall (2/2 in fall; 1/2 in spring)
- Student is eligible fall semester and plays basketball through the final game of the spring, completes the spring semester in good standing, but then transfers to another university (2/2 in fall; 1/2 in spring)

### APR EXAMPLE: MEN'S BASKETBALL – 4-YEAR

- Year 1 - 50/52 APR points
- Year 2 - 46/52 APR points
- Year 3 - 47/52 APR points
- Year 4 - 48/52 APR points
- Total: 191/208 APR points ...APR score of 918

### APR EXAMPLE: MEN'S BASKETBALL – YEAR 1

Total possible points = 52 points [13 student-athletes on scholarship X 4 points (eligibility & retention for 2 semesters)]

Student-Athlete	Eligibility in Spring 2007	Retention for Spring 2007	Eligibility in Fall 2008	Retention for Fall 2008	Total Earned	Total Possible
1	1	1	1	1	4	4
2	1	1	1	Transferred (GPA = 2.3)	3	4
3	1	1	1	1	4	4
4	1	1	1	Went Professional	3	3
5	1	1	Ineligible	1	3	4
6	1	1	1	1	4	4
7	1	1	1	1	4	4
8	1	1	1	1	4	4
9	1	1	1	1	4	4
10	1	1	Ineligible	Went Professional	2	4
11	1	1	1	1	4	4
12	1	1	1	1	4	4
13	1	1	1	1	4	4
Total Points					47	51

Team's APR would be 922 – calculated by dividing 47 by 51 and multiplying by 1000