

IOWA STATE UNIVERSITY

DEPARTMENT OF AEROSPACE ENGINEERING

International Research Experience for Graduate and Undergraduate Students

Bio-Inspired Aerodynamics and Bio-Inspired Engineering

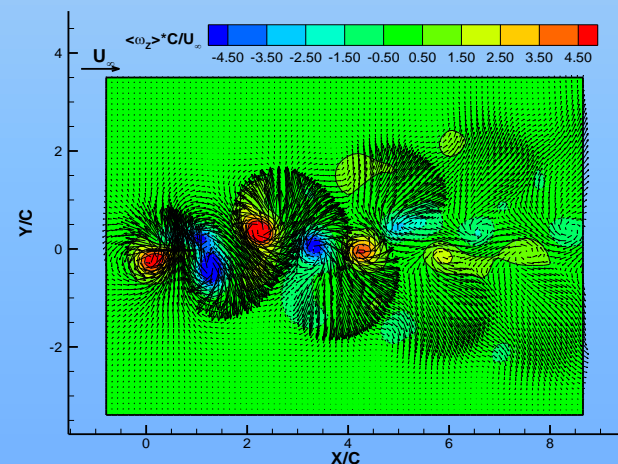
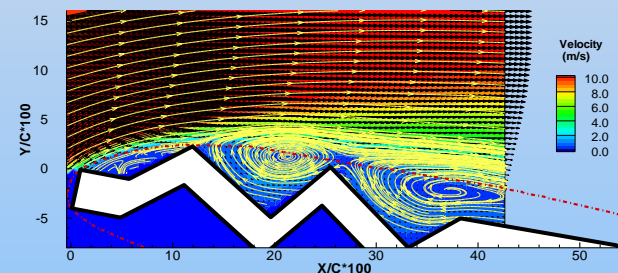
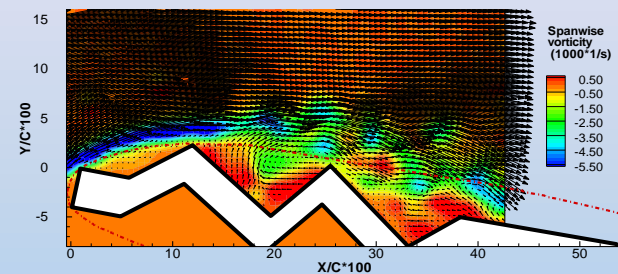
Summer 2012

Iowa State University offers an intensive **8-week international research experience program** in Bio-Inspired Aerodynamics for graduate and undergraduate students. Four fellowships are sponsored each year by the Office of International Science and Engineering (OISE) of National Science Foundation (NSF). Students will carry out international collaborative researches at **J.C. Wu Aerodynamics Research Center of Shanghai Jiao Tong University (SJTU)** in Shanghai, China to receive training and get hands-on research experience in related to **Bio-Inspired Aerodynamics and Bio-inspired Engineering for the Development of Next Generation Micro-Air-Vehicles**.

PROGRAM HIGHLIGHTS

- **One-on-one mentoring** from a faculty mentor.
- **Immersive research experience** on analytical, computational, and experimental aerodynamics.
- Additional **Short courses and workshops** on Chinese language, culture and history.
- **Field trips** to Shanghai Automobile Wind Tunnel Center and famous Chinese historical sites.
- **Networking with Chinese students, staff and faculty members** at weekly "lunch and learn".

APPLICATION DEADLINE: March 01, 2012



STIPEND & EXPENSES COVERED

The program starts **June 04, 2012** and ends **July 20, 2012**. The program provides each student:

- \$4,000 stipend
- Up to \$2,000 travel expenses
- free housing and meal plan
- free field trips

ELIGIBILITY

All applicants must:

- Be a U.S. citizen or permanent resident of the United States.
- Have completed 4-years Math, Physics, and Fluid Mechanics or Aerodynamics courses.
- GPA > 3.2.

MORE INFORMATION

Dr. Hui Hu
Dept. of Aerospace Engineering
Iowa State University, Ames, Iowa.
Email: huhui@iastate.edu

CHINESE HOST PROFESSORS:

Prof. Hong Liu and Prof. J. C. Wu
Shanghai Jiao Tong University